

The Indra Report for

**Jimmy Page**

9 January 1944

4:00 AM War Time

Heston, Hounslow, England

Latitude 51 N 29 Longitude 0 W 22

GMT: 03:00:00 Time Zone: 0 hours West. Tropical Zodiac



Libra Moon, Inc  
704 Ridge Rd  
Telford, PA 18969  
[www.libramoonastrology.com](http://www.libramoonastrology.com)  
[www.feelbythemoon.com](http://www.feelbythemoon.com)  
[www.zodiac-reports.com](http://www.zodiac-reports.com)

# INTRODUCTION

This Report called INDRA (Version 1.7) creates a psychological mirror of your life, by interpreting the astronomical symbols present at your moment of birth using a large amount of prewritten text. INDRA describes your basic motivations, perceptions, inclinations, and character from a number of different perspectives giving a highly accurate composite view of your life. Your contradictory urges and drives as well as your chief focuses are described in INDRA. You will understand yourself better by studying this material. Your INDRA report provides guidelines for personal improvement and self discovery. Your life can improve quickly and dramatically if you apply the suggestions given here. By raising your aims and expectations you can obtain a deeper self-understanding and thereby resolve your inner conflicts and contradictions. INDRA is not meant as a substitute for astrological consultations, therapy, or the study of astrology; it is an interactive tool to enhance these things. Truly, INDRA provides a foundation for self-understanding.

The INDRA Report is divided into Twelve sections or chapters, reflecting the Twelve basic areas of your life.

- I. The Structure and Intent of Your Life
  - A. Hemisphere and Quadrant Emphasis
  - B. Elements and Modes Balanced
  - C. Ascendant and Midheaven.
  - D. The Conjunctions
- II. THE SUN - Your ego structure.
- III. THE MOON - Your personal life.
- IV. MERCURY - Your mental life.
- V. VENUS - Your love nature.
- VI. MARS - Your energy.
- VII. JUPITER - Your values.
- VIII. SATURN - Your obligations.
- IX. URANUS - Your search for freedom.
- X. NEPTUNE - Your spiritual aspirations and ideals.
- XI. PLUTO - Your need for fundamental change.
- XII. Summation
  - A. Your Uniqueness.
  - B. Your Easiest Areas.
  - C. Your Most Persistent Difficulties.
  - D. The Growth Aspects.
  - E. The Declinations.
  - F. Your Karmic Direction.

## **SECTION I. The Structure and Intent of Your Life.**

There are four items of general interest that we want to take up here in Section I: A) Hemisphere and Quadrant Emphasis, B) Elements and Modes, C) The Ascendant and Midheaven, and D) The Conjunctions. These four categories give us an intelligent overview of how you structure personal experience and what you aim for in life. This general patterning gives us a context to understand the specific personal meaning of the material in Sections 2 through 11.

### **A. Hemisphere and Quadrant Emphasis**

The different areas of life are laid out in the horoscope by spatial territories called houses. These areas of life show interests and general involvements for each person. These areas can be grouped together for a vast overview of most basic inclinations of the person. The most useful general groupings of houses is into hemispheres and quadrants. Emphasis in a hemisphere or quadrant shows a particularly strong focus toward life from that perspective.

#### **1. Hemisphere**

The horoscope can be split into 2 equal parts, either horizontally (giving us the upper and lower hemispheres) or vertically (giving us the right and left hemispheres). The Upper Hemisphere shows the outer, more extroverted side of the personality, the Lower Hemisphere shows the more introverted and hidden side of the personality. In the Left Hemisphere planets are rising and this shows action. In the Right Hemisphere planets are setting and this shows reaction.

#### **Most Planets Above the Horizon**

You have the majority of your planets above the horizon showing that you have a need for contact with the outer world in order to feel fulfilled each day. You enjoy projects, achieving and a sense of accomplishment. Success for its own sake is more important than what security it might present to you.

#### **Most Planets Setting**

You have the majority of your planets on the western half (or right-hand side) of your chart. Your natural tendency is to seek others' approval and to question the probable outcome of an action before putting your first efforts forward.

#### **2. Quadrant**

The two ways of splitting the horoscope into hemispheres can be applied simultaneously giving us four quadrants. The FIRST is called the quadrant of personality. The SECOND is called the quadrant of the environment. The THIRD is called the quadrant of relationship. The FOURTH is called the quadrant of service.

## Most Planets in the Third Quadrant

You have the majority of your planets in the third quadrant. You desire to relate and will seek out experiences that bring you in contact with people and increase your scope of information of others. This is your primary motivation in all activities. You want physical, emotional, or intellectual contact with others. This is your primary vehicle of personal development.

### B. Elements and Modes

The Elements and Modes show what we aim for in life. They show our broadest focus and in the most general sense, how we go about achieving our goals.

#### 1. Elements

The four elements (fire, earth, air and water) are the most comprehensive inventory of the personality that we have. Everything in the universe including the human personality can be examined in terms of the four elements. FIRE is your basic enthusiastic urge, EARTH shows your concern for the material world, AIR is the element of abstract thought, WATER is your empathy impulse. Fire and earth are primitive and focus on the self. Air and water are derivative and focused on others. Fire and air are naturally extrovert, optimistic, active, and freedom oriented. Earth and water are basically introvert, pessimistic, passive, and security oriented.

#### Fire

You have 30% of your chart in the fire element. This fire supplies you with great energy for your own personal projects. Still, you suffer if the projects that you select are too big. You need quick victories to keep from losing heart, and to keep believing in yourself. The magic ingredient is believing in yourself. When you forget this, your life produces much frustration; you end up driven by duty more than desire. The trick to working with your fire element is to design the placement of your energy so that you get sufficient positive reinforcement, enabling you to keep reinvesting in your own projects.

#### Earth

You have 20% of your chart in the earth element. You have a natural knack for dealing with money, material resources, and projects where the end result is important. You may worry about your results and be very concerned that you aren't doing as well as you should materially. Still, in the long run, you are quite accomplished in knowing how to get the most out of existing conditions.

## Air

You have a large volume of air in your chart. You are a true people person. You like connecting people with people, people with ideas, and ideas with ideas. You are interested in everything and may find yourself studying many subjects at once and taking great interest and pleasure in things other people find irrelevant. You may end up being very trivial in your perspective on life even though your scope of vision is vast. Still, others find you gregarious and pleasant. Avoid procrastinating on projects and chores. Gathering more data is no substitute for action. When your house, existing in this material plane, is on fire, don't collect more data, GET OUT.

## Water

The Moon is your only water planet. You have 10% of your chart in water. You have a struggle to develop a meaningful, personal, emotional life because others expect more from you than you are able to give. You don't express as much sympathy and feelings as others. Still, others are very important in your process of accessing and expressing your feelings.

## 2. Modes

The three modes are CARDINAL, FIXED, and MUTABLE. The modes of expression show how you act out your urges in the world. They represent your most basic responding mechanism toward all of life experience. The cardinal planets show direct expression in physical action, leadership ability and strength.

The fixed mode planets in your chart show reaction, consistency, persistency, endurance and stubbornness. The mutable planets in your chart show synthesis, blending, malleableness, thought, forethought, debate and wisdom. The following statements show the way the three modes manifest in your life.

### Cardinal

You have an abundance of cardinal planets in your chart. You are very active. You are able to choose a direction and go your own way in life. You are stronger than most of the people you know and this gives you a natural desire for leadership. Be aware, you act impulsively and this can be either a strength or a weakness. Try to control your assertions so that you stay in harmony with your environment and you won't suffer from self-inflicted accidents or difficulties.

## Fixed

You have 20% of your planets in the fixed mode. You don't have as much stick-to-itiveness as most people. Still, if circumstances require it, you can put forth great amounts of energy in a controlled way, treading water until new opportunities to act present themselves.

## Mutable

You have an abundance of mutability in your chart. You are a thinker and attempt to accommodate a number of circumstances and people in your environment.

You may have difficulty choosing a direction and staying with it. Truth has a way of becoming a highly personal subjective factor; consequently, others think of you as not being able to communicate simple truths in a factual way. You are nervous and may need more B-Vitamins in your diet, rest, and meditation in order to be balanced.

### C. The Ascendant and Midheaven (Signs and Aspects)

#### 1. The Ascendant

The ascendant is symbolic of our relationship to our immediate environment.

This is the point rising in the east when we are born. One manifestation of our immediate environment is our physical body. The physical environment includes our body, our surroundings and our emotional and mental states. Thus, the ascendant tells us how our inner core expresses itself, and how we take in information from others and the universe generally. The sign rising in your horoscope tells us the type of energy you are processing, the type of physical body that you have for doing the processing and the natural inclinations you have in the personal arena in life. The planets in aspect to your ascendant tell us the kind of energy and stamina you have as natural allies in life. The ascendant is opposite the seventh house cusp (the place where we meet others and the world). This axis (ascendant-descendant) is how we clarify ourselves through relationships. Planets in aspect to this axis indicate the types of people and the types of relationships we seek as well as how and why we seek them.

## SCORPIO RISING

Let's face it, you're intense. You have boundless energy and employ it freely on any task at hand. You need to be discriminating so that your efforts come to something. You have difficulty changing course once you set sail, so make sure you are heading in the right direction before you set sail. Others never really know you and a certain "loner" quality is within you. This doesn't have to be lonely. You are always fighting battles within your own soul that keep you

preoccupied with your inner qualities. You are secretive by inclination. You hold your thoughts as precious and useful to you alone. When you do wish to take someone into your inner life, words fail to describe your true inner feelings.

Strange as it may seem, you place a high value on relationships. You go out of your way to bring them about and to maintain them. Still, at your heart space, your marriage partner looking into your eyes has the distinct feeling of looking into "one way mirrors". Your emotional inner sanctuary is so private, it is only rarely that you let even yourself in.

### Sun Sextile the Ascendant

You are very creative and instill a sense of confidence in those around you. This gives you luck with people and you usually accomplish your goals. Your skills with people create opportunities for you to learn about yourself and about life. This is your formula for success. Your self acceptance and positive mindset unconsciously expresses itself to people conveying a feeling of confidence and competency. Your natural good feeling for your self allows you to put your positive attributes together in one place and express them.

### Mercury Sextile the Ascendant

You are animated and have a knack for getting your thoughts across to others. Traveling and movement can be just as much a path to knowledge as study. The highway of life for you is interesting and communicating your findings to others is part of the excitement.

### Pluto Square the Ascendant

Things don't always go as planned. Years of work can go down the drain in an emotional fit when the world doesn't live up to your expectations. You have great amounts of emotional energy and fortitude. You come into your own in life when this energy is controlled and directed in an intelligent manner. A certain vindictive streak does you harm and stops others from getting close to you until it is recognized and dealt with.

## 2. The Midheaven

The Midheaven is the high point in your chart. It indicates what you aspire for, what you see as your duty, and what authority and limits are about. Because of this basic meaning the Midheaven indicates how you live out your social station and what you do for your career. The point opposite the Midheaven is the fourth house cusp, referred to as the nadir, which is the indication of our roots, our heritage. This axis (Midheaven-Nadir) indicates the way we grow in life. The sign on the Midheaven shows our basic energy and approach toward dealing with the world. Planets in aspect to the Midheaven show qualities of our inner being that



we wish to contribute to the world and that we wish to be fulfilled through our interaction with the outer world.

## VIRGO MIDHEAVEN

You are careful about taking on new responsibilities. Once committed, you try to do your best. You make progress in life by paying attention to details and by focusing on the most important items in your daily experiences and completing them satisfactorily.

### Sun Sesquiquadrate Midheaven

You have forceful and erratic ways of expressing your personality to others. You wish for and achieve positions of authority in life. You have some ups and downs until you learn unique and consistent methods of self expression. These come to you eventually as does meaning and significance in the position that you assume in other people's life.

### Moon Sextile Midheaven

You have an inner knowing as to what will happen in a group so you work well with the public. Your mind and emotions are well balanced against each other and this helps you access and express your very fertile imagination. Others like you as they sense your natural empathy. As you become comfortable with yourself and your own feelings you are able to express your feelings to others in an inspirational way.

### Mercury Sesquiquadrate Midheaven

You are mentally creative and very innovative. Although your mind works erratically and faster than most others, you are good at communicating your thoughts to others.

### Venus Square Midheaven

You are naturally attracted to things of beauty. You are motivated by love and romance. You need to make sure that these ingredients don't override and conflict with common sense and your real responsibilities. Color, form and taste are very important to you, but there are times when your personal choices run against the grain of the culture and you need to make sure that this is not problematic. Recognize that others' taste is different without being worse.

### Mars Square Midheaven

You are a force to be reckoned with. Your life suffers some setback by your

tendency to do things your own way. This means that you "learn everything the hard way". This tendency can make you a leader or an iconoclast, sometimes both. Fighting with your superiors can become a way of life if you aren't careful. You are independent and driven by personal freedom.

Jupiter Separating Conjunction to Midheaven and unafflicted.

You have a lighthearted, bouncy manner that helps instill confidence in you and your judgment. Others like you and will be drawn in to your picture of what is happening and your values. You can excel in anything that requires long range planning and self confidence.

Uranus Square Midheaven

Working for someone else is almost unbearable. You much prefer the freedom to design your own hours and work methods. You have real difficulty getting along with others in positions of authority. Remember, although you know exactly what you are doing at times, your methods and actions look arbitrary and chaotic to others unless you take the time to explain yourself. This is always to your advantage as others are important to you.

#### D. The Conjunctions.

A Conjunction occurs when two planets are in the same immediate area of the Zodiac. The conjunctions in your chart show central linkings of basic energies in your life. When one area (represented by a planet) expresses itself, it brings along the other area (represented by the other planet). When you are studying the rest of this printout of your life, keep in mind that linking of these energies is a central theme in your life and these areas should be studied together.

Sun Conjunct Mercury

Think of Sections II. THE SUN - Your ego structure, and IV. MERCURY -Your mental life, as a single unit. These two very primary ingredients of your being express themselves together. Whatever affects one of them affects both of them. This Conjunction represents a central theme in your life.

Mars Conjunct Uranus

Think of Sections VI. MARS - Your energy, and IX. URANUS - Your search for freedom, as a single unit. This conjunction shows your spontaneous and creative qualities. This is a central theme of your nature.

## SECTION II. The SUN - Your Ego Structure

The Sun is the center of the solar system. All life revolves around it within this sphere. In the same way, the ego is the center of personal identity and gives integration and continuity to individual experience. In this sense, it might be said that the Sun shows character. This is the fixed pillar at the center of the person around which all else circulates or revolves.

The sign placement of the Sun shows the center of the individual's basic character. The sign of the Sun is the most primary indicator of the forms of experience you are attracted to. Further, this most important placement shows how and why you are attracted to these experiences.

The house placement of the Sun sign shows the primary area of expression for the individual in life. There is a psychological, emotional, and physical significance to the house placement of the Sun. Aspects to the Sun show ways that the core of the personality are linked to other component elements in the individual's life. Aspects to the Sun have a deep and overriding significance in the life of the individual and are generally more important, more prominent than other aspects in the chart.

### SUN IN CAPRICORN

You are responsible and practical to a fault. Your natural ambition and hard-working attitude brings you success although slowly. You have a strong sense of duty and consider it a matter of personal integrity to pay all of your debts and complete anything that you commit to. You are cautious, dependable and just, as a worker or boss.

You know how to conserve and regulate your energy for the long haul. Your outlook can be too serious, even morbid. Spend time learning to be more sociable and work at becoming more effective in your self-expression. To do this will not just make your life more well-rounded and enjoyable, but also more productive in very tangible ways.

#### *Sun in 2nd house*

You have a powerful picture of yourself and you expect the good things of life. You have a confidence in yourself which can be infectious. You may have a



deeper than normal interest in earning money and having material goods. The sign that your sun is in and other factors in the chart show whether or not this interest is translated into a skill.

#### *Sun in 2nd house Afflicted*

You need to guard against making poor financial decisions. You may not always listen to good advice. Be more attentive to others and less concerned with issues of power and control. An overly possessive attitude can mean that the good in life can't get to you. Try to be more open without being demanding or presumptuous and you will establish the consistent pattern of personal security that you long for.

#### SUN CONJUNCT MERCURY

You have a very close alignment between your mental skills and your ego. This can give you great depth of perception and great resolve. You need to be careful that you don't become dogmatic or develop "tunnel vision". When you become focused on one thing for a long time, you may suffer from nervous exhaustion. Learn to take breaks without losing your initiative.

#### SUN IS IN HARD ASPECT TO YOUR MARS

You are energetic and brave but sometimes too impulsive or rash. You hurt yourself and others at times through outbursts of temper. You can back a losing cause at times, throwing good energy after bad. You do this because you view your goals through a desire-incrusted lens which distorts your vision or because you mis-evaluate your own power, or both. You can guard against this tendency by learning to draw conclusions from all of life rather than just your own immediate wants. You are naturally powerful but need to guard against the tendency to run over others.

#### SUN SESQUQUADRATE YOUR MARS

Extremes of spontaneous energy can lead to accidents, brutality, and explosive temper. Your energy is very powerful but usually unregulated. Guard against selfishness and work to be more helpful and healthy in the way you express your empathy with others' feelings, then your lightening flashes of energy are directed in a useful way.

#### SUN IS IN HARD ASPECT TO YOUR URANUS

You have a strong will, an abrupt manner, and a highly original form of self-expression. You need to be careful that your basically iconoclastic nature doesn't end up separating you artificially from others. Your need for freedom,

independence, and uniqueness plays havoc with your life in youth but becomes more a force for progressive change as you get older. You love the dramatic and are a true romantic. You have a major lesson in life: to gain freedom through responsibility rather than freedom from responsibility. Once learned, relationships and projects become much more stable.

#### SUN SESQUQUADRATE YOUR URANUS

You have a strong drive to do everything your own way. This makes getting along with others quite difficult. You have freedom as a concept but must strive to see it as a reality for others, not just yourself. The creative side of your nature is powerful but unstable.

## SECTION III. The MOON - Your Personal Life.

The Moon inscribes a circle around the earth. It moves more swiftly than other astronomical bodies and thus represents day to day and moment to moment movements, adjustments and preoccupations. The Moon is the symbol of the personal life which is molded and shaped by our environment, by events, and by social and familial expectations. Further, the Moon shows our responses to life which are based on our past habits, experiences, our heritage and our individual and collective cravings.

The sign placement of the Moon shows how you project yourself to the general public, how the instinctive and imaginative component of your mind operates, how you express your feelings and your most general experiences of your family and mother.

The house placement of the Moon shows how and where you make day to day adjustments. Further, it shows the things you are most interested in dealing with in order to gain emotional equilibrium.

The aspects of the Moon show the general characteristics of the personality that are emphasized. Planets in aspect to the Moon are symbolic of qualities in the personality that are used instinctively, habitually and with a high degree of versatility.

### MOON IN CANCER

You are sympathetic and sentimental. Your imagination and feelings are well developed and run deep. You have a deep emotional bond with things and people from the past.

You cherish anyone that you have had an emotional connection with. There is an idealistic and romantic element to all your relationships. You are at home in the home.

You have a strong domestic side to your personality and you enjoy cooking for others and nurturing them. If you find yourself

falling into a mood or being very shy and withholding, attempt to become more verbal. Many difficulties can be straightened out by talking.



You develop deep emotional attachments. Because you feel so deeply for others you tend to be "all or nothing" in relationships. If you let people into your life at all you let them in completely. You may collect money from inheritance, insurance, and the government. This connection to social structures and common energy resources may be pointing to difficulties with letting go of past ties and relationships. Letting go of the past is necessary to grow.

#### *Moon in 8th house Afflicted*

Unusual emotional longings and sexual expressions that deviate from the cultural norm may make your close personal relationships very difficult and unstable. Let go of hurts through some form of self-understanding so you don't replicate past mistakes.

#### MOON IS IN HARD ASPECT TO YOUR NEPTUNE

You are emotionally sensitive to others and very idealistic. Your values and beliefs may be at odds with the status quo. As a matter of fact, they may be just odd. Don't promote an ideal or value that occurs to you without doing a thorough probe of your own deeper emotional motivations. You may find that you are wasting your time building bridges between two nonexistent points. The way out of this dilemma is to demand grounding of your ideas in the day to day workings of your own life. You may suffer from time to time from a desire to do certain things which you are also afraid of. You need to work hard at getting continuity between your values and your day to day life. Avoid escapist actions that act as compensation for feeling incapable or unworthy.

#### MOON SQUARE YOUR NEPTUNE

You believe in the unbelievable and spend hours concentrating on things that are beautiful to you but will not happen. You can be charming but naive. A deep understanding of your drives and motivations help bring balance.

## SECTION IV. MERCURY - Your Mental Life.

Mercury is the closest planet to the Sun. From the viewpoint of the earth it seems to dart back and forth across the face of the Sun, having three retrograde cycles a year. Mercury is the planet of your mental life. It shows how you receive, process and disseminate information. The sign placement of Mercury shows your basic attitude and mental habits. The aspects of Mercury show your scope of vision and your methods for accomplishing tasks.

### MERCURY IN CAPRICORN

Your mind is practical, clear and literal. You see the world pretty much as it actually is.

You are naturally resourceful because you are conservative as to what you feel is possible in any circumstance. You have a sense of diplomacy and impeccable timing in your conversation and communication.

This is not out of courtesy so much as out of your perception of how things are. You make changes along well thought out and accepted lines. You see the correct time and then jump at the right moment. Your life improves when you cultivate optimism and a deeper ability to adapt to change.



#### *Mercury in 2nd house*

You are good at finding immediate application for the resources at your disposal.

You think in terms of value. Travel and communication skills may play some role in the way that money and material resources work in your life.

#### *Mercury in 2nd house Afflicted*

You need to guard against dissipating your resources unnecessarily. Use your energy to solve problems, not to run away from them. Money comes and goes.

You do best in life materially when you save part of your income on an automatic basis.

### MERCURY IN ASPECT TO THE SUN

Your mental life is very closely tied in to the core of your being. We looked at this connection in Section II. The Sun -Your ego structure.



## MERCURY IS IN HARD ASPECT TO YOUR MARS

You can be a tireless worker and powerful promoter of a cause. You like working with instruments and machinery and have some mechanical aptitude. Your temper can be problematic, getting you into squabbles and disagreements where there doesn't have to be any. You have difficulty being either a diplomat or a leader so you are best to define your own work and territory and stick to it.

Learn to take a break when things don't go your way, rather than becoming angry and frustrated.

## MERCURY SESQUIQUADRATE YOUR MARS

Impatient and willful, you nonetheless "hit the nail on the head" quite often in conversation and analysis. Your insights are not always stable and it requires the development of diplomacy in order to get positive results from your suggestions.

You can be too stuck on your own perceptions to get any compliance or consensus.

## MERCURY IS IN HARD ASPECT TO YOUR URANUS

You get great ideas, even brilliant at times. Still, others don't always hear what you are saying and this makes you angry or standoffish. Whenever this happens, recognize that you need to be thorough and practical or else the world will not see what you have found so interesting. This is not the world's fault. Slow yourself down long enough to learn how everyone else does things and you will find a natural channel for getting your ideas across. Remember, a good idea is only a good idea until it is put into practice. Get physical exercise and you might find your nervousness much easier to control.

## MERCURY SESQUIQUADRATE YOUR URANUS

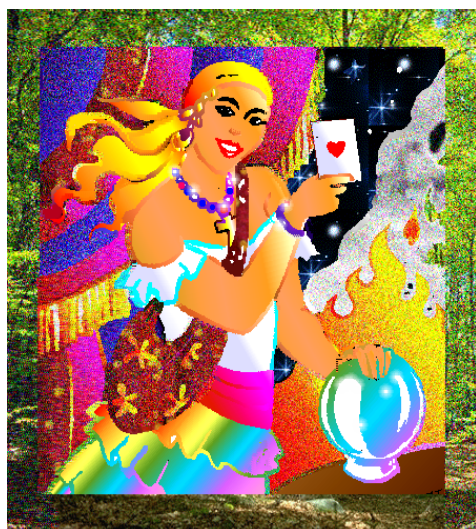
Every so often outside factors intervene and change your mental perception and events in your environment in bizarre and uncompromising ways. If you learn how your own rhythms work, you make very positive contributions to other people's development. Possessing great insights but lacking stability, you are often way ahead of yourself. Consistency brings progress.

## SECTION V. VENUS - Your Love Nature.

The planet Venus shows the way you express your love nature and what you aspire for in life as good or beautiful. Venus has much to do with how you form your values. The sign placement of Venus shows the type of love energy you have. The house placement of Venus shows the natural area of expression of the love energy. The aspects of Venus indicate how and under what circumstances you express the gentle and loving side of your nature.

### VENUS IN SAGITTARIUS

You love freedom. You are proud and impulsive with a love of adventure. You are a very sincere lover but apt to not be taken as seriously by others. You are not superficial and are very sensitive to what others say about you. You believe in the ideal in matters of love but your life really doesn't become stable until you get a balance between the physical and the philosophical side of life.



*Venus in 1st house*

You are loving and often physically attractive. You know what to present to others and you are good at putting on a happy face. Your sense of taste and social diplomacy is noticed by others. You like other people and desire their appreciation.

*Venus in 1st house Unafflicted*

Your charm and basic honesty attracts people into your life. Your artistic instincts can be developed into genuine talent, for you can see the beauty in life. Others see this beauty manifest in you, as you have a knack for putting your best foot forward.

### VENUS IS IN HARD ASPECT TO YOUR MARS

You are prone to emotional and financial excess. Your beliefs and values are at odds with your desires and it takes a lot of energy to integrate the two. You may become very interested in the baser, more physical side of romance. This is because you instinctively look for a common denominator between desires and

values. The way out of this dilemma is to work at helping others and avoid putting energy into the selfish side of your drives.

#### VENUS OPPOSITION YOUR MARS

The object of your desire always seems unattainable. This creates a frustration for you that leads to periodic boiling over of emotions. You love and hate the same person at times. You do better in your relationships when you feel better about yourself; then, you can assert yourself in more harmonious ways.

#### VENUS IS IN HARD ASPECT TO YOUR URANUS

You have a very unusual and unstable emotional nature. You can be stubborn, cold, and detached one minute, then malleable, solicitous and involved the next. You fall in and out of love easily. You are prone to abrupt but passing infatuations. As you get older, you learn to not act immediately on your attractions. You are in love with freedom and relationships represent freedom to you until you are really in them, then they seem like prison. When you find freedom inside your own soul your relationships become more stable.

#### VENUS OPPOSITION YOUR URANUS

You are a perennial child in the romantic arena, always chasing the unattainable in search of perfect and lasting freedom. The emotional contest that goes on between you and others can prohibit you from obtaining any real tranquility. It is necessary to accept relationships as a modality of excitement, exploration and growth, then do your best to not overreact to your lovers. Patience and consistency are necessary to have emotional fulfillment.

#### VENUS IS IN SOFT ASPECT TO YOUR NEPTUNE

Musical and artistic talent are part of your nature and personality. This same artistic eye and ear on life can give you a trusting and gentle disposition. You believe in people and are deeply hurt when they don't live up to your lofty expectations. You admire and are attracted to the dramatic in relationships because of their ability to promote a value. You want the world to be better than it is so you do what you can to reinforce that which you see as good.

#### VENUS SEXTILE YOUR NEPTUNE

A romantic lover, you have a naturally beautiful heart quality that moves you toward a higher ideal in yourself through relationships. The love in you creates harmony and your artistic skills and aesthetic appreciation emerge out of your heart of hearts. You have emotional textures and a gentleness that others usually only recognize when you create something of beauty, but, the subtle eye

observes your refined sensitivity to the beautiful that reveals itself every time you speak or move. You have good taste and others recognize the balance and harmony of your selection.

#### VENUS IS IN SOFT ASPECT TO YOUR PLUTO

You are powerful and magnetic. You have a magic charm for dealing with people. You have a universal love for people that is non-sectarian and non-judgmental. You are sustained by material abundance that comes from others at some time in this life and may have a sizable inheritance. When you get involved with a project you can really pour yourself into it with seemingly limitless energy.

This energy evaporates when you aren't involved in a project of personal importance.

#### VENUS TRINE YOUR PLUTO

You have a way of hanging on to what is important in your life and getting rid of everything else. Your love is powerful but very specific. You have strong likes and dislikes and are very good at emotional discernment.

## SECTION VI. MARS - Your Energy.

Mars is the planet of desires. It shows how you aim at your goals and how you power yourself toward your goals. Mars represents your most fundamental wants. The sign placement of Mars shows the fundamental nature of your assertions. The house placement of Mars shows the area of your life you are most likely to focus on. The aspects to Mars show how and to what extent your desires and assertions are involved with other aspects of living.

### MARS IN GEMINI

Your desires are very electric and effervescent. You desire to communicate but would rather talk than write. Writing takes too much time. You are nervous and excitable. Your method for getting what you want is to work with intermittent flashes of inspiration. You adjust your approach to new circumstances all the time.

*Mars in 7th house*



You are assertive in relationships and often bring out the most aggressive side of people that you interact with. This adversarial attitude can run the gambit from healthy competition to open warfare.

*Mars in 7th house Unafflicted*

Your ability to immerse yourself in someone else's life and issues while keeping your own life "tableted" is a virtue. You can be an excellent team player.

### MARS IN ASPECT TO THE SUN

You have an aspect of Mars to the Sun. This shows that you have a very strong and direct nature. Your energy and vitality are key ingredients to your self concept. This issue is taken up in some detail in the Section II. The Sun - Your Ego Structure.

### MARS IN ASPECT TO MERCURY

Your Mars in aspect to Mercury shows that you have a strong desire nature attached to your thought processes. The impact of this aspect on you reasoning

process is discussed in Section IV. Mercury - Your Mental Life.

### MARS IN ASPECT VENUS

You have Mars in aspect to Venus. This aspect shows sex appeal and interest in romance. This aspect is covered more fully in Section V. Venus - Your Love Nature.

### MARS CONJUNCT URANUS

You truly "march to a different drummer". You have some difficulty hooking up with others emotionally because of your detachment and quirky forms of expressing your feelings. You are a humanist but not particularly personal. Your brand of romance is aimed more toward ideals than to people for their own sake. You have a strong will and are capable of putting an unbelievable amount of energy into a project. Your enthusiasm for a person, a program, or a process can be short-lived because you don't like to be tied down. You have made freedom a religion and the urge to be free has claims in its own right on your personality. When you are committed to a course of action though, you can go harder and longer than others around you. Physical exercise is important daily to ensure emotional and physical well-being and balance.

### MARS IS IN SOFT ASPECT TO YOUR NEPTUNE

You have the ability to see to the heart of a matter very quickly. Your basic nature has a mystical and spiritual quality to it. You have a subtle yet passionate quality in the way you express yourself that others respond to at an emotional level. Your natural field of activity in life should be one where greater emphasis is placed on the feelings and less on reasoning if this quality is to be used fully. There is an aesthetic side to your nature and it comes out in a way that is inspiring and reinforcing of a higher vision of truth. You have a special feeling for the performing arts.

### MARS TRINE YOUR NEPTUNE

You are a crusader. You express your energy with meaning, intent, and drama. You are willing to support your ideals with actions. You have an inner magnetism that can stir a crowd or audience. You have a great capacity for devotion and inspiration.

### MARS IS IN SOFT ASPECT TO YOUR PLUTO

You attain many things that you aim for in life through the use of great force. You always seem to be able to draw up that little bit of extra energy that is necessary to push your project over the top. Actually, your supply of energy is almost

limitless although it is well regulated and doesn't appear ostentatiously. You are powerful but gentle by temperament and have economy of effort down to a fine art. You can outmaneuver or out-manipulate almost anyone, but you aren't inclined to use this skill in a mean or self-aggrandizing way. You are a good organizer and a good leader.

#### MARS SEXTILE YOUR PLUTO

You have tremendous strength and courage. You have a way of turning circumstances in your environment to your advantage. Your innate sense of how to apply your energy to the work place means that you not only have a great vitality but you use it efficiently.

## SECTION VII. JUPITER - Your Values.

Jupiter is the king of the planets. He is in charge of the order of creation. Jupiter shows your values, where you feel confident and in control, and where you feel you have something to teach others. The sign placement of Jupiter shows your values in life. The house placement of Jupiter shows the area of life you feel luckiest in and the area you receive the most help from other people and from the cosmos. The aspect patterns to Jupiter show the direct network of good and administrative power in your life.

### JUPITER IN LEO

You are drawn toward anything that gives you expression because your primary value is to display what you find in yourself. You create a dramatic effect in life through personal display and amplification. You have a natural inherent pride in all you do. You are loyal to ideas, ideals, and beliefs as well as people. A powerful sense of self colors the way you express your compassion to the world. You are universal in outlook and naturally attracted to a big picture of life in general and of your life in particular. You are generous because you believe you should share what you have. Your feeling is always that you have so much. Since you are optimistic, you see opportunity where others only see limits. There is an expansive and pervasive quality to the way you meet life. You create much in life but need to be on guard against vanity and extravagance; both can happen automatically, and both cause you much trouble.



#### *Jupiter in 9th house*

You are inherently high-minded. You have an open value system. You are willing to learn from others and expect they will be willing to learn from you. You benefit through long distance and foreign travel. You plan well for the long run. Being a visionary, you know how to express yourself in ways that go beyond just the transport of mere information; you always have a point that you wish to impart.

Your communication skills are useful in anything requiring advertising, (maybe even propaganda) for you are the conveyor of images.

#### *Jupiter in 9th house Unafflicted*



You inspire others to think big. You are a good planner. Somehow you have the ability to move on when the current situation becomes stagnant. Your love of adventure may encourage you to become proficient in some sport or outdoor activity.

#### JUPITER IS IN SOFT ASPECT TO YOUR SATURN

You have an underlying self-confidence that is based on your belief that life will give you whatever you want if you are willing to work for it. You see the reasonableness in the way that things happen and are willing to invest in yourself. You are very industrious, believing that hard work will bring you progress. You have a taste for material acquisition but are willing to work for what comes to you.

#### JUPITER SEXTILE YOUR SATURN

Good, practical judgment balances your natural tendency to see opportunity. Because you are results oriented, you are less likely than most to fritter away your energy on projects that lack long term significance. Your choice? Life long aims over immediate gratification. Progress on long range projects is slow, partly because you demand tangible results and partly because you have the good sense to establish firm foundations. This strategy of yours almost always guarantees some results. Life is easiest when you keep your long term goals constantly in mind.

## SECTION VIII. SATURN - Your Obligations.

The planet Saturn shows where you feel restricted. You feel obligations and fears through Saturn. Because of your feeling connected with Saturn you are either responsible or neglectful. The sign placement of Saturn shows the basic type of energy connected with your obligations. The house placement of Saturn shows an area of life that you feel restricted in and work hard to obtain the things that come to you. The aspects of Saturn show the most direct involvement of other areas of your life with your feelings of responsibility.

### SATURN IN GEMINI

You are afraid of being tied down and will shuttle between many options to avoid being stuck. You are attempting to refine your mind. You work best on mental projects that can be finished swiftly. You have a glibness that comes out under these circumstances and it is put to good use.

You are highly adaptable. Without discipline you are a dilettante. With proper training and focus you become an accurate and versatile disseminator of thoughts.



### *Saturn in 8th house*

You know how to discipline yourself and keep your desires in check. Relationships seem to be driven by a sense of duty as they tend to drain your energy and your money. This is preventable. Clarification over possessions and responsibilities helps you maintain productive exchanges with all your associations.

### *Saturn in 8th house Unafflicted*

You know instinctively how to benefit from existing structures. You may come into an inheritance at some time that carries several conditions with it.

### SATURN IN ASPECT TO JUPITER

You have Saturn in aspect to Jupiter showing that you have an interest in procedures and legal structures. This interest is discussed in Section VII. Jupiter - Your Values.

## SATURN IS IN HARD ASPECT TO YOUR PLUTO

You have some deep fears that color your perceptions of what is possible in life. Your negative attitudes toward yourself and life create real problems for you getting to your goals. You may attract anger or violence from others as a by-product of your fears, or express your own, as frustration and blocks bubble over. You have a tendency to "block out" anything that you fear and can't control. Courage and persistency of effort eventually bring an easier pattern in life.

## SATURN SEMI-SQUARE YOUR PLUTO

Fear of change can lock you into a pattern of continuing uncomfortableness and irritation. Learn to see the environmental and circumstantial limitations as necessary. Then, you are able to find new directions to your goals. Hard mental work can be depleting so learn to pace yourself.

## SECTION IX. URANUS - Your Search For Freedom.

The planet Uranus is beyond the orbit of Saturn and can't be seen without the aid of a telescope. It represents the sky in us, that which transcends the limits of finite life.

Uranus raises the vibration of everything it contacts. The sign placement of Uranus shows your broadest striving for freedom.

The house placement of Uranus indicates your area of direct unique expression. The aspects to Uranus indicate the way you express your need for higher consciousness.



### URANUS IN GEMINI

You have powerful ideas that may or may not be practical. You are spontaneous and excitable, ready to move with a new idea. You may be unsettled or even annoyed by activity around you.

#### *Uranus in 7th house*

You like unique and unusual people. Engaging with others brings out a healthy competition and helps in the production of new ideas. You have a romantic streak and you get involved with unusual people quite suddenly.

#### *Uranus in 7th house Unafflicted*

You make an exciting partner. You take and give a tremendous amount of freedom. You help others develop a spirit of independence. You attract a variety of interesting people into your life. People will often share a part of themselves with you that stays hidden much of the time.

### URANUS IN ASPECT TO THE SUN

You have Uranus in aspect to the Sun showing that you are a freedom lover at heart and this forms a central feature of your personality. This aspect of your nature is explained in Section II. The Sun - Your Ego Structure.

### URANUS IN ASPECT TO MERCURY

You have Uranus in aspect to Mercury. Your Mental attitudes express your quest for freedom. This is explained in Section IV. Mercury -Your Mental Life.

#### URANUS IN ASPECT TO VENUS

You have Uranus in aspect to Venus. You look for freedom in your love life. You express your creativity in a unique way. This is explained in the particular in Section V. Venus - Your Love Nature.

#### URANUS IN ASPECT TO MARS

You have Mars in aspect to Uranus which means you are attempting to raise the vibration of your desire nature during the course of this life. Exactly how that works out in the day to day world is shown by Section VI. Mars - Your Energy.

#### URANUS IS IN SOFT ASPECT TO YOUR NEPTUNE

You have an interest in spiritual subjects and are inclined to live out one of your higher visions of truth at some time in this life. You project a big picture of the possible in society. Your unconscious mind is a forceful, creative energy that bursts forth every so often.

#### URANUS TRINE YOUR NEPTUNE

You have a deep underlying faith in openness and democratic ideals. Your actions are colored by an unconscious belief that the most positive conclusion to life events will occur. Your natural movement toward freedom and self expression finds you riding a wave of cultural change.

#### URANUS IS IN SOFT ASPECT TO YOUR PLUTO

Your unusual sense of timing and peculiar ideas get a fair hearing even though you are way out of focus from the conscious direction of the world. You are blessed with some mechanical skills as well as possessing some deeper insight into people's motivation. In relationships you are always touching sensitive places in others' consciousness, forcing them to grow.

#### URANUS SEXTILE YOUR PLUTO

Great social forces afoot during your life can be a source of complete change of direction for you. You know how to go with forces greater than your own life. You are led by the logic of experience and your adjustment to it in order to achieve personal freedom in some dimension of life, even if this freedom is limited.

## SECTION X. NEPTUNE - Your Spiritual Aspirations and Ideals.

The planet Neptune has an almost perfectly circular orbit. It represents the part of our nature that strives for perfection, that looks to some higher ideal. The planet Neptune rules the ocean and the part of us that is beyond the limits of the shores of personal existence. The culture moves with the cycles of Neptune and it is the primary indicator of your connection to the culture that you live in. The sign of Neptune shows an ideal that you desire to manifest. The house placement of Neptune shows the area of your life that you want to express this ideal in. The aspect patterns of Neptune indicate the most direct connections yet most subtle networking of your personality into the world at large.



### NEPTUNE IN LIBRA

You have a powerful desire to create harmony because you believe that by doing so you reduce the pressure on people and create the circumstances of justice, peace, and understanding. You see humanitarian ideals not just as correct, but aesthetically pleasing.

#### *Neptune in 11th house*

You are an idealist but may expect too much from friends. You like friends who are intuitive and artistic. You admire people who can add a new dimension to your own reasoning and have the ability to effect change in others.

#### *Neptune in 11th house Unafflicted*

You bring an attractive, higher outlook to your social life. On the other hand, because of this it is quite difficult to be "one of the boys" because you have a deep need to uphold a higher standard. Until you become truly comfortable with yourself you may feel quite lonely.

### NEPTUNE IN ASPECT TO THE MOON

You have an aspect of Neptune to the Moon. This indicates a deep interest in the arts and in cultural pursuits. How your aesthetic taste influences your daily life

is discussed further in Section III. The Moon - Your Personal Life.

#### NEPTUNE IN ASPECT TO VENUS

You have Neptune in aspect to Venus. This indicates that you are very artistic by inclination and idealistic in love. This pattern is described in Section V. Venus - Your Love Nature.

#### NEPTUNE IN ASPECT TO MARS

You have Neptune in aspect with your Mars. This shows that you are idealistic and have a magnetic personality. How this works out in your life is described in Section VI. Mars - Your Energy.

#### NEPTUNE IN ASPECT TO URANUS

You have Neptune in aspect to Uranus showing that one part of your nature will have a propensity to act out the unexpected. How this manifests is indicated in Section IX. Uranus - Your Search for Freedom.

#### NEPTUNE IS IN SOFT ASPECT TO YOUR PLUTO

You are fundamentally an idealist. You would like to see change come about in a way that doesn't destroy the existing social order. You believe in transition and transformation as saner and kinder principles of social change than revolutionary upheaval.

#### NEPTUNE SEXTILE YOUR PLUTO

Your higher ideals are the continuous recipient of forceful energy for change. Your long range perspective (even though this may at times be unconscious) is always toward your ideals winning out through deep self transformation.

## SECTION XI. PLUTO - Your Need For Fundamental Change.

The planet Pluto represents the dark underground part of you. It shows your ability to transform the most fundamental properties in your own inner nature. The sign of Pluto is the way the obsessive, compulsive and committed part of your nature expresses itself. The house placement of Pluto shows the area of life where you make your most fundamental and most potent changes. The aspects to Pluto show the deepest most unconscious links in your personality structure.



### PLUTO IN LEO

At best, you believe in yourself and are willing to stand on your own. You have a need for self expression. At worst, you are completely stuck on yourself, and have a strong desire to bend everyone else to your will.

#### *Pluto in 9th house*

You have a great desire to expand your horizons and your general knowledge. This can lead you to travel, study religion, philosophy and ethics, and do some deep soul-searching. There is an adventuresome quality to your nature that is almost never at rest.

#### *Pluto in 9th house Unafflicted*

When you talk, others listen. You often only reveal your inner thoughts when you are in close, private company. Then, you "draw a bead" on the most important issue and express yourself in terse but captivating phrases. You have qualities that can inspire in any teaching situation.

### PLUTO IN ASPECT TO VENUS

You have an aspect of Pluto to Venus showing that you have a very deeply entrenched love nature that you are transforming. The details of this are discussed in Section V. Venus - Your Love Nature.

### PLUTO IN ASPECT TO MARS



You have an aspect of Pluto to Mars. This indicates that you have a very powerful desire nature that is being refocused. This aspect of your life is discussed in Section VI. Mars - Your Energy.

#### PLUTO IN ASPECT TO SATURN

You have an aspect of Pluto to Saturn. This shows that you are very impressed with things in the past. The working out of this impression is taken up in Section VIII. Saturn - Your Obligations.

#### PLUTO IN ASPECT TO URANUS

You have an aspect of Pluto to Uranus indicating you have a powerful urge to change in a fundamental way. This change is described in Section IX. Uranus - Your Search for Freedom.

#### PLUTO IN ASPECT TO NEPTUNE

You have an aspect of Pluto to Neptune which shows your involvement in a large cultural process. This involvement is described in Section X. Neptune - Your Spiritual Aspirations and Ideals.

## **SECTION XII. SUMMATION.**

### **A. YOUR UNIQUENESS**

Part of your style of being a person is tied to your personal method of adapting to and interacting with other people. This aspect of your personality shows itself through every aspect of how you deal with the environment. This method of your being encourages as well as reveals your uniqueness.

### **YOUR MAJOR PLANETARY ASPECT IS A SEXTILE.**

You are comprehensive in your outlook. Your inclination is to seek help and to change directions when you run into problems. Not that you lack fortitude, it is just that you are able to see an easier way to bring about changes than fighting. You have the ability to create opportunity by altering the focus of a situation to become favorable to you and your projects. You are the master of blending ingredients together and coming up with new opportunities. Your keyword is Synthesis.

### **B. YOUR EASIEST AREAS.**

The following material is an index of things that you have developed as inner resources. You may take them for granted, but in times of reevaluation and rest this part of your personality can provide you comfort and strength.

Well-Aspected Jupiter.

Your sense of humor and your optimism buoys you up. Your self confidence opens doors for you. The fun loving, joyful side of your nature aids you in all forms of achievement. Your belief in yourself opens doors. Improvement comes through your faith in life.

Moon in Cancer.

Your instincts and personal feelings are so deep and your ability to bond with others so direct and honest that you easily get along with anyone you have established a positive past history with.

Jupiter in the Ninth House.

You have a natural adaptive mechanism in life that stems from your ability to draw

on things faraway in time and space. Confidence is your secret key. When you have complete faith in the universe to do the right thing your success is secure.

### C. YOUR MOST PERSISTENT DIFFICULTIES.

This material describes the "cutting edge" of your work on yourself. The thoughts rendered here are meant as further guidelines for growth. You should take difficulties and challenges in the right spirit. They are always positive indicators as to how you can experience the joy of becoming a better person and more like your REAL SELF.

#### Afflicted Sun

The way that you naturally seek self-expression and ego satisfaction cuts against the grain of personal integration. Simply put, you get in your own way. Locate the source of your self-imposed conflict and work toward forms of expression that bring the conflicting elements of your personality together on friendly terms.

#### Afflicted Moon

You have routines in your life that operate as if on remote control. These unconscious habits bring you a harvest that is out of tune with your conscious aim in life. Before you act, be thorough in your projection of what you can meaningfully expect from your actions. You will learn in this manner and be able to bring about more positive results from your efforts.

#### Afflicted Mercury

You suffer because you draw the wrong conclusions from your perceptions. There are several ways of breaking out of a negative picture. You can ask other people's advice as to your present course of action in life, you can strive to be more empirical in your observations, and you can look for a consistent pattern in your past actions. Through expanding your perceptions, you can break out of a self-limiting mental bubble.

#### Moon in the Eighth House

Your attachment to the way things used to be hold you back. Your moods are easier to overcome when you break the pattern of past habits and live more in the present.

#### Venus in the First House

You may suffer from a heavy dose of vanity. The only way out of a self-created trap is when your picture of yourself has risen to identify with all life. Then, you

build relationships on love and beauty that are unique and lasting.

### Mars in the Seventh House

You have difficulty with relationships because you become too "bossy". Be less concerned with what others do and practice being more of a self-starter. Be aware of how you affect others and your energy will function better.

## D. THE GROWTH ASPECTS

The Growth aspects operate differently than other aspects in your chart. While it is possible to use them descriptively, as showing finer shades of meaning within the chart, we wish to use them in a different manner for our purposes. The growth aspects are tools of self development. If you apply attention to the various qualities in your nature linked through the growth aspects, you will see positive change over time. These qualities generally do not show quick effortless solutions, but instead show a path of change requiring exertion and emotional honesty. Under these circumstances, the way these aspects of your nature change through time are truly amazing. The qualities mentioned here can be the very mechanisms to release the highest, finest side of your nature.

### Sun in Growth Aspect to Saturn

You grow through learning lessons of responsibility in life. Desire for personal self expression is not directly correlated to your perception of what the world offers. Learning lessons of duty, responsibility, self sufficiency, and boundaries leads eventually to integration with life and the completion of important personal goals.

### Sun Quincunx Saturn

It is easy for you to take on responsibilities that aren't yours while ignoring ones that are. Because you work hard and aren't always recognized or compensated for it, you often "run out of steam" before your work is done. Your life works best when you learn to take care of your most important responsibilities first.

### Moon in Growth Aspect to Venus

The receptive and gentle side of your personality is always looking for an appropriate expression. You learn by trial and error how to relate your sensitivity to others without invoking disappointment or rejection from them. Learning how to receive what others give you freely requires work on your behalf.

### Moon Quincunx Venus

The frustration you experience in life often comes because you get what you ask for from other people (and life in general). Unfortunately, what you ask for isn't what you want. Partly, you are slowly learning better communication skills, and partly you are learning to understand your own deeper cravings as they are. You see the unacknowledged and undigested parts of your sensitivity and creativity present in others, but, these are really projections that you have to own within your self if you are to change for the better.

### Moon in Growth Aspect to Mars

You have a quick emotional trigger. This in itself is not problematic, but, your sense of timing and the nature of your emotional responses need some adjustment. As you get more comfortable with your true feelings, you get better at knowing how and when to express yourself. The first step in getting what you want out of life is to recognize what you really desire. The second step is to become comfortable with what you want. The third step is to harmonize existing conflicts of drives. This points you toward the path of higher self development.

### Moon Semi-Sextile Mars

You sometimes don't see your drives until they are expressed. This can create embarrassment and surprise for you. Your life improves when you recognize and express correctly your strong desire to nurture.

### Moon in Growth Aspect to Uranus

A certain underlying erratic action can prevent you from being as productive with your energy as you would like. You will need to develop meaningful outlets for your nervous temperament while learning to integrate the spontaneous side of your nature in a positive way with the more pensive and more traditional sides of your personality.

### Moon Semi-Sextile Uranus

Your self picture may not include the more dramatically innovative thrust that emerges periodically from your unconscious mind. There is a certain panache or "twist" that you place on your actions, sometimes at the last minute. Your uniqueness and sense of individuality finds expression in this way. Through focusing on this process you are able to stabilize its function and have it be more useful in your life.

### Mercury in Growth Aspect to Saturn

You worry about things that can't affect you and that don't matter. If you are

patient and use time correctly life improves. You will need to study your mental habits to see how you limit your options unnecessarily. Slow progress is vastly different than no progress. Your growth in life gains speed when you are able to separate real limits from your fears.

#### Mercury Quincunx Saturn

Putting your life in order will require exercising positive judgment as to how to get the large projects you envision to manifest. The sheer scope of your goals in life can require more effort than is immediately obvious. Hard work can take its toll on your health. Correct partitioning of big ideas into segments that are achievable one at a time and exacting uses of your time is the way to move forward while maintaining inner poise and outer health.

### E. THE DECLINATIONS

There is another dimension to your astrology chart. This has to do with planets being the same distance from the celestial equator. When both planets are on the same side of this plane there are called parallel. When the planets are the same distance but on opposite sides of the celestial equator they are referred to as being contra-parallel. Both of these aspect activate your ability to organize and reorganize some aspect of your life.

#### Moon Parallel Uranus

You have an instinctive response to events. You are ready to take up uncommon ideas or points of view as they seem appropriate. You attract unusual people and your own underlying uniqueness creates a wave of activity around you. There is a deep independence imbedded in your nature. The urge for freedom may at time override all other concerns.

#### Mercury Parallel Venus

You color your expressions with great cheerfulness and artistic flair. There is a sociableness to your demeanor which give you sparkle. The aesthetic taste you bring to conversation gives you charm, graciousness, and general likeability.

#### Mars Parallel Pluto

Endurance is your strength and vengeful drives your weakness. When you are able to see clearly your hidden drives, motives, and desires, a path of deep personal change becomes open to you, which in turn lends itself to unleashing your very powerful and transformative energy into productive channels.

#### Saturn Parallel Uranus

You possess a very strong will and can stay with a point or project long after it has become difficult. There is a creative and original aspect of your personality, which is balanced by the common sense and practical side of your nature.

#### Sun Contra-Parallel Saturn

Your strength in life develops out of your deep, serious outlook on life. At your best you are practical and at your worst you are too "turned in" on yourself. This can lead to depression. Slow progress made carefully, over a long period of time, seems most real to you.

#### Mercury Contra-Parallel North Node of the Moon

Your communication skills are automatic and a useful tool in your life. You generally know how to get your point across to people and are often able to capture people's imagination with your use of words or gestures.

#### Venus Contra-Parallel North Node of the Moon

You have the destiny to connect with people in this life that you will feel you have known before. Your love of beauty and lovely surroundings can be a help or a hindrance to your progress depending on your ability to achieve balance and to judge correctly what is appropriate in every situation.

### F. YOUR KARMIC DIRECTION

The Moon's North Node is an all encompassing and instructive point of synthesis in the chart; we could easily start or end our analysis with this one single factor.

Because this indicator is so all inclusive it most shows your karmic direction in life. The sign placement of your North node points to your destiny. When your actions, interests, and values are structured by this position, your general sense of personal well being improves. The house placement of the North Node of the Moon indicates or points to an area of life, an arena of experience. By confronting, even augmenting this arena you can inadvertently improve every aspect of your life. By dealing with issues connected to the North Node placement in your chart your general character strengthens and refines.

#### North Node of the Moon in Leo

Self-expression advances you in life, but your ability to be creative at any level is based on your foundation of self-respect. You learn to love others more deeply and more personally when you are able to embrace and accept yourself, as you are right now. You see yourself and others in ideal terms and relate and have commitment only to the ideal. You admire others because they remind you of

what you might become, what you feel you "should be" now. Practice a pattern of commitment and you are led quite naturally to struggles that improve your self image. The dramatic qualities in life give you progress.

North Node of the Moon in Leo and in the Ninth House

Be willing to commit to great passionate leaps of logic. Your interest in and subsequent quest for theoretical purity can slow you down in the process of finding yourself. Direct expression of and commitment to a higher ideal brings personal growth regardless of the nature of the ideal.



## TABLE OF DEFINITIONS

These are some basic astrological definitions. Reading through this material can enhance your understanding of your INDRA report. You may want to take up a more serious study of these symbols as a preliminary step to a study of all of life through astrology.

### THE PLANETS

The Sun and the Moon - Basic central core of the personality. These two bodies represent how we make decisions, how we act, and what we value.

Mercury, Venus, and Mars - The personal planets. These planets indicate our everyday concerns, our interaction with others, and our immediate environment.

Jupiter and Saturn - The planets of the culture. These planets represent our ability to interact with our society and its laws and values.

Uranus, Neptune and Pluto - The planets of our higher evolution. These planets show our ability to focus on issues that transcend our immediate life and culture.

### THE SIGNS

Fire Signs - Aries, Leo, and Sagittarius

Earth Signs - Taurus, Virgo, Capricorn

Air Signs - Gemini, Libra, Aquarius

Water Signs - Cancer, Scorpio, Pisces

Cardinal Signs - Aries, Cancer, Libra, and Capricorn

Fixed Signs - Taurus, Leo, Scorpio, and Aquarius

Mutable Signs - Gemini, Virgo, Sagittarius, and Pisces

### THE HOUSES

1st - Your personal appearance and your immediate environment.

2nd - Your self worth and your orientation toward the material world.

3rd - Your integration of basic experience and ability to learn.

4th - Your home and family.

5th - Children, romance and creative expression.

6th - Work, health and your facility with detail.

7th - One on one relationships. Marriage and partnerships.

8th - Community resources, sex, ultimate issues, financial institutions.

9th - Foreign travel, higher education, ethics and legal principles.

10th - Career and social standing.

11th - Friends and higher aims in life.

12th - The unconscious and social institutions.

The Ascendant - The beginning of the first house.

The Midheaven - The beginning of the tenth house.

## TABLE OF DEFINITIONS - continued.

### THE ASPECTS

#### \*\*\*Basic classification of aspects\*\*\*

Hard or difficult aspects. - Semi-square, Square, Sesquiquadrate, and Opposition. These are the aspects that help us recognize the ingredients in our personality that need changing.

Easy or soft aspects. - Trines and Sextiles. These are the aspects that express our talents and skills.

Growth aspects. - Semi-sextiles and quincunx. These are aspects that give us opportunity to grow. They indicate long term development of some key aspect of your personality and behavior for this life time.

Power aspects. - Conjunctions, Parallels, and Contra-parallels. These are the aspects that show energy, force, reorganization and transformational ability.

#### \*\*\*Circumstances of the planets by aspect\*\*\*

Afflicted - A planet is called afflicted when it has only hard (difficult) aspects. These planets represent our greatest challenges and our more promising areas of growth.

Unafflicted - A planet is unafflicted when it is not limited to only hard aspects. This can mean that the planet has no aspects, has only easy aspects, or has both hard and soft aspects.

Well Aspected - A planet is called well aspected when it has no hard aspects. This shows ease of expression and a certain ability to bring the ingredients symbolized forward into life with little or no conflict.

#### \*\*\*Special points in your chart\*\*\*

Ascendant - This is the same as the cusp of the first house. The Ascendant refers to your physical body and how you meet the world, how you present yourself.

Midheaven - This is the same as the cusp of your tenth house. The Midheaven refers to how we rise and fall in life, our social position and our orientation to our family, culture and history.

Moon's North Node. - Our direction in life. How we form relationship bonds with the environment as well as people.

**\*\*\* THE PLANETARY POSITIONS IN YOUR CHART\*\*\*\***

SUN position is 17 deg. 44 min. of Capricorn

MOON position is 3 deg. 11 min. of Cancer

MERCURY position is 17 deg. 10 min. of Capricorn

VENUS position is 7 deg. 04 min. of Sagittarius

MARS position is 4 deg. 52 min. of Gemini

JUPITER position is 25 deg. 58 min. of Leo

SATURN position is 21 deg. 16 min. of Gemini

URANUS position is 5 deg. 20 min. of Gemini

NEPTUNE position is 4 deg. 15 min. of Libra

PLUTO position is 8 deg. 02 min. of Leo

N. NODE position is 6 deg. 48 min. of Leo

ASCENDANT position is 13 deg. 37 min. of Scorpio

MIDHEAVEN position is 0 deg. 05 min. of Virgo

**\*\*\* HERE ARE YOUR HOUSE CUSP POSITIONS \*\*\***

1ST HOUSE CUSP position is 13 deg. 37 min. of Scorpio

2ND HOUSE CUSP position is 12 deg. 53 min. of Sagittarius  
3RD HOUSE CUSP position is 20 deg. 24 min. of Capricorn  
4TH HOUSE CUSP position is 0 deg. 05 min. of Pisces  
5TH HOUSE CUSP position is 2 deg. 00 min. of Aries  
6TH HOUSE CUSP position is 25 deg. 36 min. of Aries  
7TH HOUSE CUSP position is 13 deg. 37 min. of Taurus  
8TH HOUSE CUSP position is 12 deg. 53 min. of Gemini  
9TH HOUSE CUSP position is 20 deg. 24 min. of Cancer  
10TH HOUSE CUSP position is 0 deg. 05 min. of Virgo  
11TH HOUSE CUSP position is 2 deg. 00 min. of Libra  
12TH HOUSE CUSP position is 25 deg. 36 min. of Libra