



SOLAR WRITER

GODDESS

A SOLAR WRITER REPORT
for Anne Hamilton-Byne

WRITTEN BY BRIAN CLARK & STEPHANIE JOHNSON



Esoteric
technologies

COMPLIMENTS OF

Libra Moon, Inc

www.libramoonastrology.com

www.zodiac-reports.com

Anne Hamilton-Byne

Natal Chart

30 Dec 1921

18:30 AEST -10:00

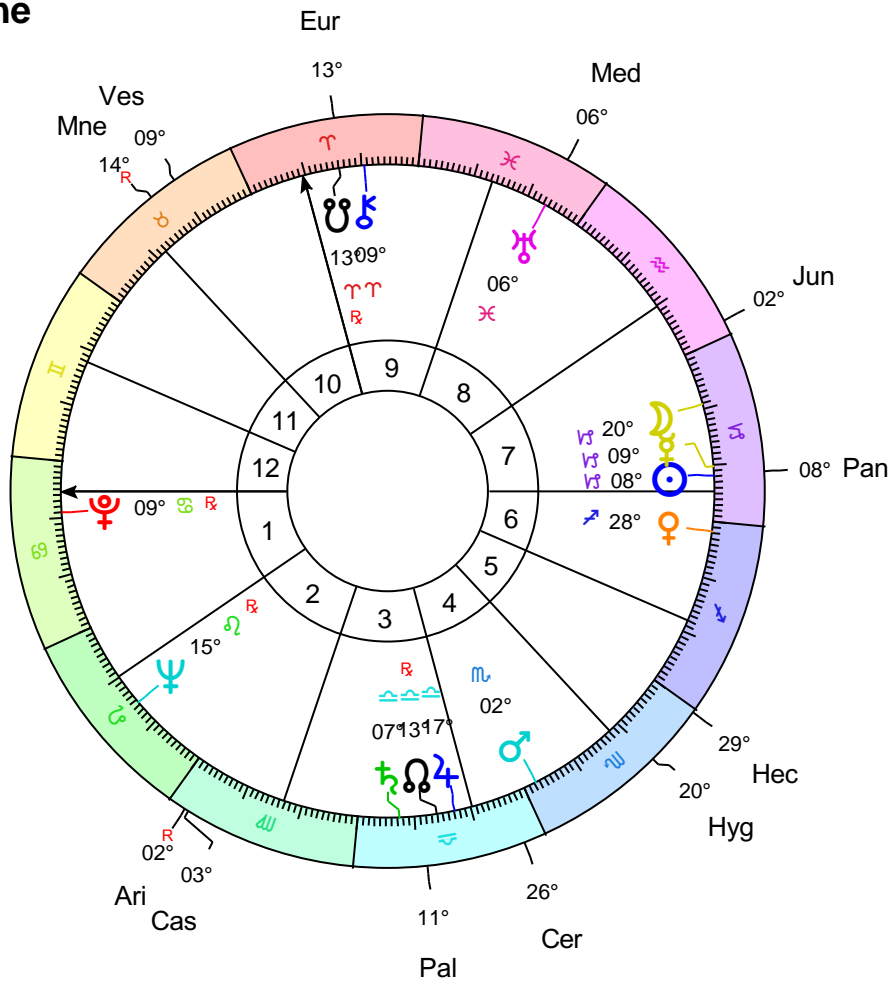
Brisbane

27°S28'

153°E02'

Tropical

Placidus



Key

Abbr	Asteroid
Cer	Ceres
Pal	Pallas Athena
Jun	Juno
Ves	Vesta
Hyg	Hygieia

Abbr	Asteroid
Ari	Ariadne
Eur	Europa
Pan	Pandora
Mne	Mnemosyne
Hec	Hecate
Cas	Cassandra
Med	Medea

Introduction



The Goddess is the custodian of life's mysteries and the primal world of archetypal forces. As representative of the world soul she engages us in the sacred rites of nature and reanimates life through the cycles of birth and death. Goddess culture flourished in the prehistoric period when magical consciousness prevailed, supernatural forces were deified and natural forces were revered. As consciousness developed through its phases the wisdom of the goddess was buried beneath the rational constructs of a scientific knowledge that erased the mysteries from life and excluded the magical processes.

With the advent of the asteroids the wisdom of the goddess is once again available to consciousness. Goddess wisdom revels in the ancient wisdom of cycles, the intelligence of the inner life, the sanctity of divination, the mystery of healing and the necessity for sacrifice and ritual. The ancient feminine wisdom of the goddesses embraced all phases of life, celebrated its mysteries, ritualized its passages and knew the power of the natural world. The Solar Writer - Goddess report celebrates twelve goddesses and heroines and seeks their wisdom and guidance.

The maxim 'as above, so below' underpins the philosophy of astrology. Inner and outer lives are woven together through investing the celestial sphere with meaning. Therefore when astronomical discoveries are made astrologers find new meaning and revelation in them. Astrological tradition suggests that with the major discovery of a planet the collective is confronted with the conscious awakening of an archetypal force that may have previously lain dormant or been repressed. As the 19th century dawned a discovery of a small planet would be made, heralding the reawakening of feminine power and the wisdom of the Goddess.

Late in the 16th century Johannes Kepler first suggested that there might be a planet between the orbit of Mars and Jupiter. Nearly two centuries later the publication of Bodes Law reiterated this possibility. Based on the theory that all the planets were in a harmonic distance from the Sun the law suggested there should be a planet orbiting between Mars and Jupiter. When Uranus was discovered in 1781 its distance from the Sun conformed to the law giving greater weight to the theory of the missing planet. Finally on New Years Eve 1800 a Sicilian astronomer spotted a new body in the region and named it Ceres after the patron goddess of his homeland. To the Sicilians Ceres favored their island and it was here they claimed Hades abducted her daughter.

One year later its orbit was confirmed and although small in comparison to the other planets the missing planet

had become visible. But early in 1802 another body was sighted between Mars and Jupiter and named Pallas Athena. Astronomers wondered if a planet had exploded in this region and therefore more would be discovered. And they were. More than four hundred of these small planets had been named as the 19th Century drew to a close.

It was not until the early 1970's as the woman's movement began to accelerate that astrologers began to take note of the significance of these new bodies, which were named asteroids. In 1973 an ephemeris of the first four discoveries was printed and the astrological community began to experiment with these new archetypes. The first four asteroids were named after the Olympian goddesses who had been previously unnamed in the astrological planetary pantheon: Ceres, Juno and Vesta were the three sisters of Jupiter while Pallas Athena was his daughter. All four were prominent in Greek myth and their cults predated their male counterparts. Previously in the astrological pantheon only the Moon and Venus were available to represent the lineage of the feminine traditions. Renewed images of the feminine had now appeared in the astrological tapestry. As astrologers began using these potent images of the asteroids the cults of the ancient goddesses were rediscovered, paralleling the cultural reclamation of feminine power. With the discovery of the asteroids and their use in astrology the ancient feminine wisdom of the goddess was brought to consciousness.

Each goddess in your personal Solar Writer - Goddess report has a specific function, being emblematic of an important sphere of your life. Every one embodies a different aspect of the Goddess herself. However, all twelve are involved in the handiwork of the Goddess. Therefore underlying each individual goddess is the sanctity of being, the awareness of the seasonal cycles of our life cycle and the acceptance of inner intelligence, signs, symbols and dreams. All twelve honor the instinctual wisdom of nature and follow her guidance.

These twelve goddesses preside over the three spheres of Heaven, the Earth and the Underworld. Being Olympians the goddess Ceres, Pallas Athena, Juno and Vesta are the goddesses of heaven who oversee the important initiations and transitions of the life cycle. These four goddesses were also the first named asteroids and the ones most frequently referred to in contemporary astrological literature. They personify four potent feminine functions or orientations to life. The goddesses of the underworld are powerfully insightful and understand the deep waters of the unconscious, the complexity of feelings, the power of mystery and magic and the uncertainty of life. These goddesses may reveal themselves through a healing crisis, the psychic senses, loss, betrayal or a myriad of other mysteries that arise in our lives. Hygieia, Cassandra, Hecate and Medea are the four goddesses who plunge the depths of the unconscious realm. Finally the goddesses who rule the Earth symbolize our worldly concerns and attitudes. Ariadne, Europa, Pandora and Mnemosyne are the influential representatives in the world who watch over our loves and labors, as well as our trials and triumphs.

The Solar Writer - Goddess report is a celebration of twelve of the numerous asteroids. Below the asteroid goddesses and heroines have been listed by their order of discovery. Each asteroid has its unique cycle and position in the horoscope. Keywords are listed below to introduce you to the meaning of each goddess as well as other astrological correlations that have a similar essence to the asteroid archetype. Each goddess will be explored through her myth and cult to appreciate her ancient role and contemporary meaning. The oracular meaning of the asteroid goddesses and heroines is based on the individual cult of the goddess. Once familiar with the presence of each goddess or heroine we will petition them for an oracle based on their position by sign and house in your horoscope.

Ceres, Asteroid No 1, was discovered in 1801. Ceres is closely aligned with the archetypes of Pluto and the Moon and especially strong when the Moon aspects Pluto. Her process may enter our lives when Pluto transits the Moon or the 4th house.

Pallas Athena, Asteroid No. 2, was discovered in 1802. Athena is sympathetic to the air signs especially the

justice and strategy of Libra and the intelligence and objectivity of Aquarius. She is aligned with the masculine archetypes of Mars and Uranus and close to Jupiter, her father's realm.

Juno, Asteroid No. 3, was discovered in 1804. Juno is the goddess of marriage and social customs. She reverberates with Libra and the 7th house. Her passionate side is reflected through the 8th principle of Scorpio and interchanges between these two astrological principles reflect the goddess.

Vesta, Asteroid No. 4, was discovered in 1807. Vesta is the spirit of the 6th house, the domain of the sacred in the everyday, the rituals of work and well being. Planets in Virgo respond to the archetype as do inner planets aspecting Saturn, the need for authenticity.

Hygieia, Asteroid No. 10, was discovered in 1849. The axis of health in the horoscope is the 6th-12th polarity. The Sun symbolizes the vitality and the ascendant suggests how we conduct that vital life force. Chiron is the archetype of healing. Hygieia is very much concerned with these principles.

Ariadne, Asteroid No. 43, was discovered in 1857. Ariadne's story plumbs the depths of the water houses. She leaves the familial terrain of the 4th house to be abandoned by her lover in the labyrinth of the 8th but awakens to her divine connection in the 12th. Neptune aspects to Venus or Mars may highlight these themes. Ariadne's process is revealed with transits to planets in the 8th house or Pluto transiting Venus or Mars.

Europa, Asteroid No. 52, was discovered in 1858. Taurus, Virgo and Capricorn and their rulers Venus, Mercury and Saturn represent the earth instinct. Of all three signs Taurus is the sign most closely aligned with Europa's passions and power. Planets in Taurus or the second house constellate the mythic pattern while transits through the second house or to Venus may evoke issues concerning values and resources

Pandora, Asteroid No. 55, was discovered in 1858. Pandora is a change agent and therefore may be sudden and unexpected like Uranus. Her curious nature and marking of threshold change is Mercurial, linking Mercury and Uranus. As an agent of transformation she has a Plutonic essence as well. Planets in Gemini or Mercury aspects to Uranus or Pluto highlight the nature of Pandora.

Mnemosyne, Asteroid No. 57, was discovered in 1860. The Moon records, reflects and reveals every heartbeat, breath and nuance of primitive life. Therefore the progressed Moon evokes memory as it progresses through the horoscope. Aspects between the Moon and Mercury as well as other planets aspecting these planetary archetypes reveal the process of feeling and rational memory.

Hecate, Asteroid No. 100, was discovered in 1868. Aspects to Mercury may signal how we might manage crossroads, our facility for change and adaptability. Crossroads in the life cycle are mapped out by the cycle of the slower moving planets while personal crossroads are reflected in the transits of the transpersonal planets to the personal ones. Note the South Node of the Moon.

Cassandra, Asteroid No. 114, was discovered in 1871. Cassandra revels in the world of Neptune - the archetype of the medial woman. Aspects between Mercury and Neptune, or Mercury in Pisces reflect Cassandra. Interconnections between Jupiter and Pluto may also ignite a similar pattern.

Medea, Asteroid No. 212, was discovered in 1880. Medea is similar to the archetypes of Pluto and Scorpio, as she understands the process of metamorphosis. Planets in the Eighth House or in aspect to Pluto may conjure up the potent magic of Medea.

Goddess Mythology



Mythology serves as a psychological record of human development recording the imagination and symbols of the culture. Mythic stories speak to the inner life as they deal with universal themes and truths illustrating the archetypal forces that influence the course of the human drama. In archaic societies myths offered an explanation of the world and its creation, the cycle of birth, growth and death, how things came into existence as well as how they disappeared. In contemporary times we have scientific explanations for many of the ancient mysteries, but myth is just as valuable to help us to imagine our own origins and invest our lives with meaning. Mythic themes stir the imagination and broaden the horizon of the individual's story placing it in a context of a larger story.

Mythology is the link between the magical phase of being when consciousness participates in nature and the rational phase when we are separated from the natural world. The magical phase embraces the culture of the Great Goddess when life is full of mystery and wonder and we are one with the natural order, not separated or expelled from it. In this phase all nature is sacred as all life is invested with the divine. The asteroids are surrogates of the Great Goddess and reconnect us to her culture. As emissaries the asteroid goddesses and heroines invest life with the sacred, value imagination and mystery and inspire ritual and sacrifice in order to reconnect to the wellsprings of her magical forces.

Following is a summary of their genealogy and mythic tradition. Let the myths resonate with your imagination and speak to you in their own way.

The Roman goddess Ceres is also known as Olympian goddess, Demeter. She is the daughter of the Titan Cronus and Rhea and mother of Persephone. She is the Corn Goddess who personifies the agricultural cycle of fertility and harvest, as well as loss and renewal through her daughter Persephone.

The Olympian goddess Pallas Athena was a daughter of Zeus, born from her father's head after he had swallowed Metis. The Romans referred to her as Minerva. She is revered as representing the wisdom of reflection and strategy.

The Roman goddess Juno is also known as the Olympian goddess, Hera. She is the daughter of the Titan Cronus and Rhea and mother to Ares, Hephaestus and Hebe. She is the goddess of Marriage and Social

Customs who oversees the seasons of a woman's life.

The Roman goddess Vesta is also known as the Olympian Goddess Hestia. She is the daughter of the Titan Cronus and Rhea and is the goddess of the Hearth who embodies sacred space.

Hygieia was the daughter of the Greek god of healing, Asclepius and the beloved goddess of Health. She is the sister of other minor healing deities and heroes including Panacea, Machaon and Podalirius. As the goddess of Health, Hygieia is the giver and preserver of well being whose function is to maintain a healthy relationship between body and soul.

The Cretan goddess Ariadne was from the Minoan dynasty. She is the daughter of King Minos and Queen Pasiphaë, granddaughter of Helios and Zeus. She is sister of Phaedra and half-sister to the Minotaur. As the wife of Dionysus, Ariadne embodies the sacred marriage having endured the trials of betrayal and abandonment.

Europa was a Phoenician princess, sister to Cadmus and matriarch of the Minoan dynasty, mother to King Minos and grandmother of Ariadne and Phaedra. She represents the creative and earthy process that supports and guides worldly success.

Pandora was the first woman, shaped by Hephaestus, to be the harbinger of a new age. She was married to Epimetheus and was the mother of Pyrrha. As a representative of the ancient ways of the goddess, Pandora brings the gift of hope.

Mnemosyne was a Titaness, a daughter of Gaia and Uranus, known as the goddess who personified the faculty of memory. As the mother to the Nine Muses she represents enchantment, inspiration and the power of remembering.

The goddess Hecate was the daughter of Perses and Asteria, the granddaughter of Phoebe, and a powerful goddess revered by all the gods. Later she became an attendant to Persephone. As an underworld goddess she was represented in her three-fold nature and was worshipped at the crossroads and as the guardian of transitions.

Cassandra was the daughter of Priam and Hecuba, the regents of the powerful dynasty of Troy. She was the twin sister to Helenus and sister to seventeen other siblings including Paris and Hector. From an early age she had oracular ability, yet no one believed her. Cassandra carries the feminine mysteries of divination even in a contemporary world that devalues the sacred tradition.

Medea was the Princess of Colchis, granddaughter of the Sun god, Helios and niece of the sorceress, Circe. Medea is the great witch of the Greek myths, knowledgeable in herbs, healing and the art of metamorphosis.

Ceres - The Earth Mother



*'I died to mineral and plant became
Died from the plant and took a sentient frame
Died from the beast and donned a human dress
When by my dying did I ere grow less?'
Rumi*

Ceres is the Roman agricultural goddess whose gift of grain, 'cereal', was distributed to mankind as thanksgiving for the release of her beloved daughter from the underworld and also as an eternal symbol of the continuity of life. Ceres is the goddess of agriculture who instinctually knows the cycle of loss, death and rebirth through her attachment to her beloved daughter.

The Roman goddess was modeled on her Greek counterpart Demeter whose central myth focused on the loss of her daughter, Persephone. It was this myth, which inspired the greatest initiation rites in the ancient world - the Eleusinian Mysteries. These mysteries re-enacted the terrifying journey of Persephone into the underworld and through these rituals both male and female participants faced their terror of death and became thankful for the gift of life.

Ceres, corn goddess, patron of farm life and vegetation is both an agricultural and underworld deity. She is an earth mother who presides over the cycle of fertility, birth, harvest, decay, death and rebirth. From the archaic period the goddess protected and insured the fertility and propagation of the crops and livestock. Her sanctuaries were placed near arable land, outside cities, where pilgrims would come to petition the goddess for a fertile crop and feast on the abundant gifts of food that the goddess provided.

Her myth was more ancient than her male contemporaries and reached back to the epoch when deities of the underworld (death) and the earth (life) were one. Ceres represents both loss and harvest and her classical story embraces each aspect in the myth of her daughter who becomes the Queen of the Underworld.

The myth of Ceres/Demeter and her daughter is a heartbreaking narrative of closeness, separation, grief and reunion, the motivation behind the establishment of the Eleusinian Mysteries. The brutal breaking of their attachment is the impetus that allows each woman to develop independently of one another into sovereignty

over their own sphere. Since antiquity this poignant portrait of the mother-daughter bond has probably been the most cherished of all the Greek myths. The classical myth is also remarkable as it places the feminine characters at the heart of the narrative with the male gods on the periphery honoring a sacred and profound feminine story. The Ceres myth was first told in a hymn to the great goddess Demeter.

Kore, the innocent maiden Persephone, was playing in a meadow gathering flowers when the earth rumbled beneath her and broke open. Suddenly from the chasm in the earth a chariot drawn by four black horses appeared. In the chariot was Hades, the Lord of the Underworld, who seized her. As she struggled to break free the chariot carrying them disappeared into the black hole. Demeter wandered aimlessly in search of her daughter. No mortal or god could help her with information about her daughter's disappearance. Finally after nine days she met Hecate, the goddess of the crossroads. Hecate heard Persephone screams, the only clue to the abduction.

Demeter raged and withdrew the gift of fertility from the earth causing a great famine. She also withdrew herself from the company of the gods and in disguise wandered amongst mortals unnoticed. Grief-stricken, depleted and withered, Demeter wandered to Eleusis where she met the daughters of the local king who pitied her and brought her home. Their mother gave Demeter the task of caring for her infant son. Demeter nursed him on ambrosia and nectar and every night she would baptize the infant in fire in order to render him immortal and safeguard him from the fate of the eternal cycle of life, death and rebirth. However, one evening the Queen interrupted Demeter in the middle of her ritual and screamed in fear for the boy's safety. At that moment the cycle of mourning was broken. Demeter cast off her old age, changing her size and appearance to reveal herself as the great goddess and commanded the king to build her a great temple and introduce her worship to the people of Eleusis.

However, Demeter was still furious at the abduction of her daughter and withheld the new crop's seed so the earth continued to be barren. Zeus intervened and demanded Demeter return to Olympus and fulfill her duties. Demeter refused. Finally Zeus in his anguish agreed to release Persephone from the underworld so the crops would grow again. Persephone was eager to be reunited with her mother. But before she left the underworld Hades gave her a pomegranate seed to ingest. Innocently Persephone took the seed and swallowed it now binding her eternally to this place. Having eaten in the underworld meant Persephone now belonged there.

Demeter and Persephone's reunion was ecstatic and both rejoiced at the sight of one another even though they knew they would not be together as in the past. As the mother, Ceres indicates the necessity to nurture a creative project even though that means letting it go. By relinquishing an attachment a phase of the cycle ends and prepares us for a new beginning.

Astrologically the goddess Ceres represents the feminine wisdom that acknowledges loss. Loss is intricately woven into the tapestry of life; attachment, separation and loss are part of life's greatest mystery. Feminine wisdom knows that grief is only one phase of the great wheel and mourning allows the process to be complete so that life may be renewed. Following is a portrayal of the goddess Ceres in your natal horoscope.

Ceres is in the 4th House

This is a significant placement of the goddess Ceres indicating that home and family play a prominent role in your life. This could mean that you seek refuge in your home, creating a comfortable and supportive environment. You are keen to own your own home and decorate it in a manner that creates a peaceful environment. Your home becomes your castle providing a secure base for you to escape the challenges of the world. You also provide a stable home for your loved ones. Family members, both immediate and extended family, seek your counsel and protection. In many cases your family can be your entire social circle. In fact you may encourage your family members to rely on you, perhaps trying to control the behavior of those closest to

you. Does your family consider you to be the Matriarch or Patriarch? Or does your spouse accuse you of being a little too manipulative? Do you feel a little unappreciated, as if others don't really realize how much you love them? You believe that you are only concerned for the welfare of your nearest and dearest, but one of your lessons is in discerning the difference between dependence and love.

The goddess Ceres learnt the wisdom of letting go of those she loved. Therefore you need to make sure that you are not overly attached to your family or home. If you are the type of person who thinks: 'blood is thicker than water' then you may need to broaden your concept of family. If you spend the majority of your free time at home then you may need to challenge your attachment to the comforts of your home. In other words you need to ensure that you are independent enough to nurture both your own and your loved ones interests in the world.

Of course, it is possible that you discover a real need to be cloistered. If this is the case then you may enjoy living on your own, according to your own set of principles. You may also benefit from joining a religious community that is dedicated to nurturing aspects of humanity. However, it is more likely that you can enjoy your role of nurturing and advising both your immediate and extended family members without needing to control the outcome. You may enjoy working closely with nature, owning a farm or working with an environment group on the land or one that provides housing for the underprivileged. Property investment may also appeal to you with your gift of understanding the cycles of property market.

Ceres is in Libra

Relationships are a key source of sustenance in your life, feeding a need to feel connected with other people. You enjoy company, working and playing closely with colleagues, friends and relatives. You have a keen understanding of human nature and are a wise and supportive friend. Your marital union has a significant influence on your moods on a daily basis and your life choices. Therefore you need to choose a partner carefully. You need someone who is kind, caring and who shares your need for harmonious interactions. If you have children then your relationship with your offspring is also very important. Your spouse needs to share your love of children and cooperate in parenting. Fairness and equality are important. Any marital and family conflict troubles you. Fortunately you are likely to be committed to seeking ways to improve the relations between you and your loved ones and share many happy moments. As the Spanish playwright Lope de Vega said: 'Harmony is pure love, for love is a concerto.' You may also choose work that reflects your love of amicable relationships such as counseling or diplomacy.

Your relationship with your mother is the basis of all of your other interactions. Your mother has a significant influence on your need for harmony. Depending on other aspects of your birth chart, she could have been a positive influence. Your mother may have been kind and loving, showing you the way to interact. On the other hand your mother's manipulative ways may have prompted you to seek solace in other associations. Of course, one of your main challenges is to develop a positive self-image. The more that you become self-reliant, the more that you are likely to really enjoy your own company. You may also find fulfillment in creative work that explores personal and global relationships. Film, theater, dance, art and other artistic endeavors could provide a positive outlet for your knowledge.

Pallas Athena - The Wisdom Of The Warrior



*'I celebrate the powers of Pallas Athena, the protectress of the city:
Dread, as Ares, She busies herself with the works of war,
With the sack of cities, with the battle-cry and with the combats.
It is She also who saves the fighters that go to war and come back alive.
Hail, Goddess, give us good fortune and happiness Pallas.'
Homeric Hymn 11*

The architectural masterpiece, the Parthenon, was dedicated to the goddess whom the classical Athenians cherished. Pallas Athena was their advocate for law and order, the teacher of household arts like spinning, weaving, and cooking, as well as their protector and defender.

As their goddess of war she helped the Greeks defeat Troy, the Athenians repel the Persians; as their goddess of useful and decorative arts she inspired them to build exceptional monuments and temples. The goddess of merciful justice transformed the law courts and at the dawn of the fifth century she inspired the democratic shift in Athenian politics. Athena was the revered goddess of the Athenians who celebrated her birthday each year with a great festival and procession through the Agora up to the Acropolis.

As a multi-tasked goddess many images are associated with Pallas Athena but it is the owl that reminds us of her wisdom. Her intelligence is 'bright-eyed' and sharp, focused on the immediate, located in the present, aligned with the head and not the instinct. Pallas Athena embodies the rational and encourages left-brain thinking. Her wisdom controls the instincts, learning to direct them into heroic pursuits to eradicate what is dark and primitive. She is civilizing and organizing, bringing culture and cultivation to mankind. Justice and law are part of her new order replacing retaliation and revenge.

Strategic, reflective and controlled her craft and skill is mirrored in the multiplicity of devices she offered man, the fertility of her ideas and the usefulness of her inventions and techniques. As Pronoia she is 'before knowing' embracing forethought and strategic thinking. As a warrior queen she was born from the forehead of her father Zeus, fully armored and mature, suggesting that the wisdom of goddess had been reborn into a new order. As father's special daughter Pallas Athena mirrored the rational intelligence and counsel of Zeus. Metis, the mother of Athena, was an ancient goddess of wisdom known as Wise Counsel or Cunning Intelligence. She knew the

feminine mysteries, the intelligence articulated by the heart and the inner world of instinct and intuition. From her Pallas Athena inherited another kind of wisdom: the wisdom of intuitive knowing often experienced in the belly as a 'gut instinct'. It is a knowing that may speak through symptoms or disease, through creativity or craft, or radiate through stillness and tranquility or even erupt in anger or hostility. It is a wisdom born out of an intimate connection between mind and matter, a fluid way of being that the ancient Greeks knew as Sophia.

Athena is a proud daughter born from a power struggle between her powerfully dominant father and her intuitively wise mother. Consciously Athena only knows her father's way and the new order. Born of man, like Eve, this myth is often cited when tracing the emergence of 'father-right' from the long held tradition of 'mother-right'. The daughter is now aligned with the sky father who colludes in rejecting the earth mother. The tables have turned in the familial pattern and now it is father and daughter colluding against mother, no longer mother conspiring with her youngest son against the father. When Athena emerges she reflects the need for logic and rationality rather than feeling and instinct. Her path follows the reason of the head, aligned with her father, not the impulse of the heart, the vulnerable feminine side that she has not been nurtured by.

Like Eve, Athena's feminine legacy is not so easily erased. Both their myths contain the image of the snake, a sacred symbol of their legacy of feminine wisdom, healing and regeneration. By the classical period Athena's wisdom became subjugated to Zeus. Shaped by the masculine wisdom becomes linear, logical and rational. Metis is no longer acknowledged as her other parent. The internal wisdom of cycles, intuitive knowing and the complexity of intrapsychic understanding becomes concealed under Athena's armor.

Athena is also associated with the arts of healing, health and regeneration. As Athena Nike she was the goddess of Victory, first victorious in war and later a victor on the sports field. Athena signaled victory and as a patron of heroes she was also known as the goddess of the near, as she was always close to the hero and a staunch supporter of the heroic. As the goddess of war and defender of her father's realm Athena became aligned with the hero as his guide and protector. In mythic portrayals of the hero, Athena stands behind or beside him as his staunch ally against the monstrous and dark forces. When Pallas Athena appears prominently in a birth chart she encourages us to be heroic and battle the regressive forces of our instinctual nature. It is necessary to reflect on the situation and not react emotionally, detaching enough to formulate a decisive plan of action.

In astrology the goddess Pallas Athena represents the reflection and meditation that develops out of the turmoil of chaos and uncertainty, helping us to become more strategic and deliberate in our actions. Metis is the valued intelligence that guides our instincts and plans strategically and arises into consciousness at exactly the right moment. Pallas Athena discerns and through reflecting on emotionally entangled situations allows consciousness to develop. Following are the house and sign descriptions of the goddess Pallas Athena in your horoscope.

Pallas is in the 3rd House

Have you ever been told that you have a 'big mouth', or more positively that you are not afraid to speak your mind? You have a strong sense of fair play and an equally strong urge to speak up on behalf of yourself and others. Part of you would like the quiet life, but there is this other part that can't keep quiet. Don't be ashamed. It is your integrity speaking. The positive side of this trait is that you are a born advocate, able to take on a cause. Writing, speaking, strategizing, lobbying and networking are all powerful skills. The goddess Pallas is urging you to use your skills to fight against injustice. You are highly intelligent and your communication skills are keen. You also have many creative and original ideas as well as the ability to gather and disseminate knowledge and information. Where other people can be apathetic, you are optimistic. Therefore you have an advantage against anyone who resorts to dishonesty and corruption or anyone who tries to hoodwink those in your immediate vicinity. You might have learned these strategic skills early in life in relating to brothers and sisters.

In ancient times the third house of the astrology chart was considered to be the house of the goddess. Therefore the goddess Pallas is strong in this position. You have strong opinions and some of them are likely to be unorthodox. In particular you may rail against certain strictures of society and organized religion. You may respect the teachings of religious organizations, but fight against the injustice of their political systems. In the second century BC Roman comic dramatist Publius Terentius Afer said: 'charity begins at home'. This is an adage with which you thoroughly agree. You have the ability to look around your neighborhood and see the everyday problems that need addressing. Then you actively campaign for improvements. In fact you thrive on making contact with like-minded associates, easily making friends and influencing people. Your practical advice is well received and your optimism appreciated. You may choose a career in advocacy, networking, marketing, public relations, information dissemination, journalism, policymaking or teaching.

Pallas is in Libra

You are fair and reasonable, able to see matters from everyone's point of view. For this reason you are an excellent co-worker, enjoying an affable and equable working environment. You also make a good boss, because you are even-handed, more interested in teamwork than one-upmanship. You work well with other people, helping to develop individual talents and sharing the workload. Co-workers are also happy to share their troubles knowing that you will not judge them but rather will help them resolve their problems in a fair-minded manner. Generally speaking you are popular, although you do not strive for popularity. Your aim is to ensure that everyone is treated well, and that everyone is happy.

You like to establish harmony. Being a diplomat, you are able to smooth over troubled waters at home and work. Your personal relationships can suffer if you feel that you have been unfairly treated. Equality is important. Ethics also play a prominent role in your life, either your own personal ethics or your profession's code of ethics. You do not take kindly to dictators and may join your work union to ensure equality in the workplace. You do your fair share at work and home and expect others to do their share, as well as appreciate your contribution. You are likely to react to anyone who uses authority to judge or control. You will follow another person's lead, but only if you respect their methodology and if you are given the freedom to pursue your own talents. You are quite demure and are happy to forgo your own ideas if this seems best for the team effort.

You will only stand firm if you really believe that something is not beneficial for all involved. When conflict arises you enjoy peaceful negotiations rather than brash arguments. Then again you are not afraid to fight for your own, or other people's rights. You can be a good strategist because you have a good understanding of people. Your challenge is to believe in your individual rights as much as you believe in the common good. Not everyone is as high minded as you. Has someone else taken the credit for your ideas? Or have you allowed someone else to walk roughshod over your rights? You may have to fight for recognition for your talents at some stage in your life, perhaps even taking legal action. On the other hand you may take up a position promoting other people's talents, forgoing your own creative expression. You may enjoy working in the legal profession or reporting on legal affairs. A job as a court correspondent, lawyer or court clerk may appeal.

Some forms of esoteric astrology believe that the sign Libra rules the vegetable kingdom meaning that you are likely to have a natural affinity with flora. You may enjoy gardening, walks in nature, scenic art and films and flowers. Beauty is likely to sooth your soul. The arts may also appeal. You have a gift for seeing the patterns in nature, art and crafts. Therefore you could be a designer of fine arts, crafts or gardens either as a hobby or a profession. The goddess Pallas is calling on you to express your talents through your own associations with people, beauty and the natural world.

Juno - Socializing The Soul



*'And wheresoever we went, like Juno's swans,
Still we went coupled and inseparable.'
As You Like It, Shakespeare*

Juno Regina shares the honor of the highest deity in the Roman pantheon as queen next to her husband-brother Jupiter, king of the gods. Each woman had their own guardian spirit named Juno, who guided their transitions into the stages of motherhood and marriage. As a light bringer she was also invoked for protection during childbirth. As the goddess of marriage her Roman name Juno was the derivative of June, the season of the bride. Women celebrated her annually in the festival of Matronalia. By the Roman period Juno had become emblematic of the woman as wife and citizen presiding over social customs and duties. In earlier Greek myths Juno was a powerful goddess in her own right known as Hera, the adored feminine deity of many powerful city-states.

The derivation of Hera's name may be related to Hora or season, as she is custodian of the seasons of a woman's life. On the Olympian pantheon she was the goddess of marriage and embodied social ritual and custom. At her cult in Argos young girls ran races to prepare for their marriage and the rituals of womanhood. In the Greek myths Hera was a wife and unlike her husband Hera does not have affairs. However, in Greek myth Hera also seeks revenge upon her husbands' liaisons with others. By the classical period the tales of Zeus and Hera rival contemporary soap operas where the cycle of betrayal, outrage and revenge is the central plot. Hera consistently plots revenge against Zeus' lovers and children from these affairs. However, there was an earlier time when the Olympian couple was not always locked in power struggles or scheming and bullying each other. This was when they first fell in love in the palace of their aunt and uncle where they were being hidden, protected by their mother Rhea from the familial wars that were raging with their father. Here in the great palace beneath the sea, they consummated their relationship, a relationship that was to remain secret for nearly 300 years. Underpinning the later myths are fragments, which reveal Hera was an ancient goddess before she became aligned with her brother in a sacred marriage.

Epithets of Hera such as 'cow-eyed' refer to her earlier association with the earth and agriculture, while her epithet 'of the white arms' may link her to an association with the Moon. She is often depicted in three phases as the maiden, the fulfilled and the solitary, a trinity of aspects represented by Hebe, Hera and Hecate. Hebe

was the daughter of Hera and the cupbearer to the Gods who became married to Heracles after his ascension to Olympus. In this aspect Hera is the maiden, the youth and the aspect of the feminine that retains her virginity, even in relationship. The central phase was motherhood, wifehood and a woman of power. Local folklore suggested she bathed in the streams of Argos where she was able to regain her virginity lost in the marriage with Zeus. Hecate was associated with the final phase embracing Hera's aloneness and need for solace. At times Hera would leave Zeus to go off on her own to pursue her needs for privacy, renewal and worship.

Hera was indigenous to Greece long before Zeus was triumphant. The cult of Hera may have been so powerful that unlike the other goddesses Zeus was unable to be dominant, settling instead for an equal relationship. Her cults on Samos and in Argos are linked to the prehistorical period. On Samos one of the first mammoth stone temples of the archaic period was built in honor of Hera. Similarly her temple at Olympus predates the magnificent one built for Zeus. No doubt Hera is an older goddess like Demeter and Hestia, her sisters who were born to Cronus and Rhea before their brothers. However, to incorporate Hera into the politics on Olympus she became the wife of Zeus and mother to his children.

Another mythic fragment, which suggests Hera is a powerful ancient goddess, is her link to Heracles. Even though their relationship is estranged Heracles is named for the great goddess. His name literally translates into the glory of Hera. Hera whose name closely resembles hero is aligned with the greatest of all heroes, Heracles and plays a potent role in many heroic sagas. Their antagonistic relationship ironically spurred him on to become the greatest hero and ironically myth depicts Hera as his mother-in-law. No longer the object of her scorn Hera has challenged Heracles to become the hero. As mother-in-law she models a strong and uncompromising woman who demands the hero be the best man for her daughter.

Juno and Hera are the composite that portray the seasons of a woman's life as well as the evolution of woman's roles. The spirit of Juno in contemporary woman has new power and possibilities and the placement of the goddess in our horoscope is an invitation to challenge the constructs of the social roles that are inhibiting for us. As a partner and equal Juno is supportive, enterprising, challenging and confronting helping shape potentiality into reality.

In astrology the goddess Juno represents the status and achievement in the world that are intricately aligned with social customs and tradition. Equality in relationship is necessary at all stages of the life cycle to insure both inner and outer fulfillment. Juno's ancient legacy is equal relationship and through her archetypal experience you can become aligned with your heroic self. Descriptions of the goddess in your astrological chart follow:

Juno is in the 7th House

The goddess Juno is the guardian spirit of the marriage sector of your birth chart indicating that your marriage is likely to shape your destiny. For this reason you need to choose your life partner very carefully. Other aspects of your birth chart determine the nature of your matrimony, whether traditional marriage or a modern de facto or same-sex union. Whatever your preference, you are seeking commitment. Once you have made a pledge for all of the right reasons then it is unlikely that you will let go of this union even under great duress. You demand loyalty, fidelity, intimacy and monogamy. US Senator Hilary Clinton is a prime example of this placement of the goddess Juno. Her marriage to former US President Bill has certainly shaped her destiny and she has not relinquished her union, no matter how rough the ride. She has demanded commitment and equality.

On the other hand if you discover that perhaps you have made a mistake in your choice of spouse then you are likely to try to adapt your own behavior rather than relinquish your union. You take your marital commitment seriously and expect reciprocity. An ill-fated union is likely to end badly, particularly if betrayal is the theme. Infidelity or deceptions are likely to attract your wrath. Emotional rage is not uncommon in the event of a partner's

lack of loyalty, whether this has been momentary or constant. You will find it a real challenge to rise above the volcanic eruption of emotions that are part of this goddess' influence. You would be well-advised to seek a more objective counselor in order to help you work through your feelings of rage and betrayal. Allow the goddess' influence to empower you for greater good, enabling you to protect yourself from your spouse's actions and move forward with your own life. Learn your lessons so that you can choose your next partner more wisely, because you are likely to seek another partner. Marriage and commitment are cornerstones of your life, whether this is a traditional marriage or a more unconventional union.

The goddess Juno is challenging you to break the social norms in your marriage and to find your true soul mate. Therefore equality is important. You seek love and equal status in your marriage, a sharing of responsibilities and freedom. The goddess Juno and her husband Jupiter (Zeus) fought battles for supremacy within their union. If you are fortunate then you enjoy a marriage of equality, a true meeting of hearts and minds. As a team you are impressive. Your marriage provides bounteous rewards for you personally and professionally. However, if you are not so fortunate then you could fall prey to struggles for parity within your marriage. It is important that you both have equal opportunities, and you are likely to experience anger and resentment if your spouse does not treat you like an equal partner. Any lack of fairness is likely to result in your marriage resembling a battlefield, with both of you struggling for supremacy. If separation or divorce is the ultimate outcome then you may be reluctant to marry again, preferring to be alone rather than give someone such power to shape your destiny. Your goal then becomes to ensure both inner and outer fulfillment on your own personal journey.

Juno is in Aquarius

You are on a quest to discover the goddess or god within, depending on your gender. You are not on this quest merely for your own benefit, but for the benefit of society. You are keen to share your discoveries with others. As a result you are more likely to be married to a cause or career rather than a person. If someone else provides support for this quest then you are happy to enter into a meaningful relationship, but you are not necessarily interested in a long lasting commitment. Equality and friendship are more important to you than a traditional marriage.

You feel a responsibility to the community at large, and would rather focus on your own intellectual, political or quirky interests rather than take the time necessary to nurture an intimate relationship. Perhaps you feel that you have a particular mission to complete, something that is going to change society? Or maybe you simply feel the need to be free of conventional expectations? Whatever the impetus, you are unlikely to be willing to compromise your principles even for a good marriage. Therefore if you do marry then it must be to someone who respects your individual pursuits, supports your independence and shares a need for an unorthodox relationship.

You could enjoy an unconventional marriage if it provides plenty of time and space apart. Perhaps you would enjoy living in separate houses or living apart for periods of time. However, it is also likely that you live on your own for much of your life, preferring the company of friends and loved ones, while still remaining free to pursue your own interests. You are only likely to enter intimate relationships on your own terms. Take care to respect the rights of others as much as you honor your own. The goddess Juno is asking that you inspire others on their own journeys, but don't leave a trail of broken hearts along the path.

Vesta - The Inner Life



*'Leave those vain moralists, my friend, and return to the depth of your soul:
that is where you will always rediscover the source of the sacred fire which so often inflamed us with love of the
sublime virtues;
that is where you will see the eternal image of true beauty, the contemplation of which inspires us with a holy
enthusiasm.'*

Jean-Jacques Rousseau

The cult of the Roman goddess Vesta was connected to the Greek Hestia. However, the Roman archetype had considerably altered from her Hellenic counterpart. By the Roman period the sacrament of virginity was liberalized, no longer conceptualized as a psychic state but now institutionalized as a spiritual way of being. Priestesses of Vesta, known as Vestal Virgins, served the goddess for a period of thirty years. While the position was privileged it also was one of great piety, devotion and responsibility. Vestal Virgins tended the sacred flame and guarded the Palladium, the secret objects brought from Troy to preserve the memory of the ancient city and protect the new satellite city of Rome. However, in ancient Greece Hestia was the embodiment of an internal and sacred space not a religious institution. Vesta's heritage reaches back to the traditions of honoring the authenticity of the inner life as symbolized by the spirit of the sacred flame, not a system of regulations.

In ancient Greece the goddess received the highest respect. Acknowledged as the deity mankind must first honor when feasting and drinking the goddess embodied grace and virtue. Veiled and virginal her sanctuaries were places of refuge, asylum and political peace. Constant, focused and disliking change Vesta is the hearth, a symbol for both the center and the focus of the home as well as the metaphor for family life and the family circle. As custodian of the hearth she is central to psychic life representing the sacral center, the goddess who honors sacred space and protects holy images. She embodies spatiality, conferring safe places to congregate, mediating soul by giving it a hallowed place to be acknowledged. As a virgin (unto herself) goddess Vesta is the custodian of soulful space personifying the stillness at the center of our busy everyday lives. As goddess of hospitality she also welcomes travelers across the threshold offering sanctuary and hospice. Vesta is the continuity of family life and the coherence it brings to our everyday experiences. Vesta was the first-born child, the first devoured by Saturn and the last one to be disgorged from his belly. Therefore she represents the beginning and the end, the alpha and the omega, the eternal cycle. Vesta is not a part of the outer rim of the cycle but situated at its center, personifying stillness, discretion, centering and immobility, aspects of her Greek

counterpart, Hestia.

Few Greek myths remain of Hestia; she is rarely personified, no statues or temples remain, yet at times in the archaic period she was the most honored goddess, worshipped at the center of the city and the center of the Greek household. By the classical period Hestia was not included as one of the twelve Olympians having been replaced by Dionysus. Hestia and her brother Hades are the only two siblings who remain detached from the Olympian family dramas and feuds. Unlike their brothers, Poseidon and Zeus, or their sisters, Hera and Demeter, they are not identified with their family of origin or their siblings. Their places are internal, interior and introverted. Few images or alters survive as reminders of their worship or importance in cult. There were virtually no temples erected to them and they were seldom represented in art, sculpture or vase painting. Neither were they parents to heroes like their siblings. As gods of place both Hestia and Hades have been re-placed and dis-placed which are potent clues as to what we culturally and psychologically have done with these archetypal energies. In a modern context this place of Hestia, as a metaphor for the hearth of inner life, has become dis-placed, re-placed by the rush and busyness of the outer world. When the inner life is sidelined and banished to the fringes of society, anxiety, terror and panic can no longer be constrained in the community. Hestia reflects the need for solace, quiet and retreat into the inner sanctuary of the Self.

As an image of center, Hestia is not personified or remembered by statues or temples but manifests through the sense of peace. She is the central point; the meeting place the fires of the home, the hearth, the Omphalos as the symbol for the center of the Earth. In antiquity her sanctuaries were non-warring zones, places of political peace. Plato remarked, *'when the Gods warred, only Hestia did not take part'* that characterized the goddess' propensity to non-involvement. In the earlier myths of Hestia she resisted the advances of both her brother Poseidon and her nephew Apollo and was honored with remaining eternally virginal, symbolic of her attachment to the inner life. She is the aspect of self, which can never be violated or abused and always able to access the soul. Hestia is central to psychic life and expressions like 'can't settle down', 'off center', being off base' remind us of being out of touch with Hestia. As the hearth she is a guide to the inner life and the central image around which soulful images can constellate. She represents sacred space, the meditative moment the soul of place and the feeling of home.

In astrology Vesta is the inner instinct that honors soul by giving it a sacred place, an altar, a quiet moment. She represents hospice and offers hospitality to the aspects of self that feel displaced and dislocated. As the hearth light she offers stillness, quietude, meditation and solitude in the midst of the everyday. The inner life is the container for anxiety and despair as well as a refuge from the pollution of daily life. Below are descriptions of where Vesta is to be found in your horoscope, the spheres where she seeks to be honored in your life.

Vesta is in the 10th House

You invest of a lot of your time and energy into your profession and carving a career path. Your role in the public eye is important. Your creative juices flow at work. No one values your input as much as you do. You excel at work and know when to sacrifice your own personal needs to the benefit of your profession. This can be a problem for a few reasons. You may overwork and become burnt out. This can be avoided if you learn when to stop and take time out. You may also refuse to listen to other people's advice, even that of your superiors. You are an expert and know best. This may well be true but you need to respect hierarchies when they exist. If you are lucky then you may become a leader in your field with no reason to be accountable to anyone other than yourself.

Sacrifice is a strong theme in your career; you sacrifice your own private needs for a prominent role in your public life. As mentioned previously this could be a matter of working too hard. On the other hand it could mean that you work with disadvantage members of the community, perhaps even those in far away countries.

In some cases it is possible that you have failed to discover your true career path. If this is the case then you may feel lost and directionless. You need to search your heart to discover something that inspires you, or something that you think you could contribute to society. Then you need to take a disciplined approach to achieving your objectives, not allowing distractions or despondency to deter you. At some stage during your lifetime you are likely to discover a vocation that truly lights your fires. When you do, it is filled with spirit and probably connected to serving others in the world. Since you are from the tradition of the Vestals, you protect what is sacred to the society to which you belong.

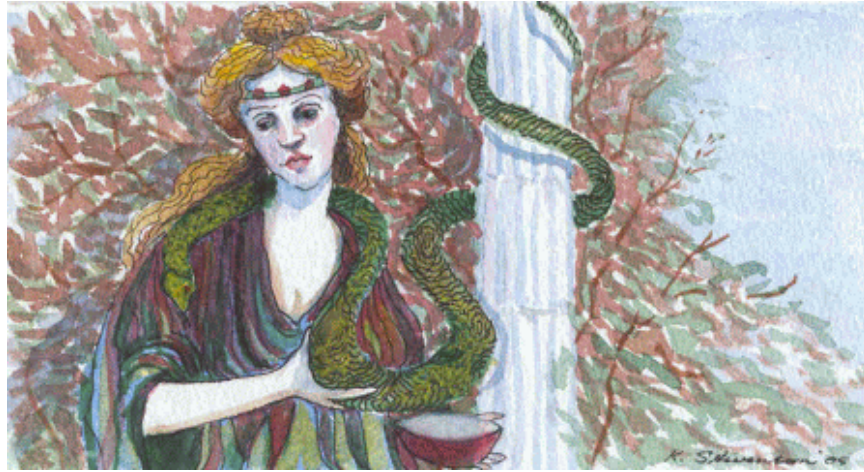
Vesta is in Taurus

You have a strong sense of duty and loyalty to your family. You also have strong opinions about members of the family who fail to live up to your high standards. Both of these traits apply not just to your own personal and extended family, but also to society in general. You are a reliable and trustworthy member of your family and society and cannot abide those who fail to carry out their duties.

As a child you may have experienced the effects of irresponsible adult caretakers. Therefore you understand, firsthand, the importance of stability. On the other hand you may have benefited from strong family support as a youngster that now feeds your resolve to contribute to society as an adult, a kind of 'pay-it-forward' attitude. Either way as an adult you are committed to making sure that loved ones feel secure and supported. You like to keep the home fires burning. Cooking, cleaning, and gardening can all be sources of comfort. In fact you fully understand the Zen Buddhist Proverb that states: *'Before enlightenment - chop wood, carry water. After enlightenment - chop wood, carry water.'*

You are passionate about people's need to treasure each other and the planet Earth. This is a spiritual motivating force in your life. You treasure nature, feeling refreshed at a deep level whenever you spend time close to the earth, surrounded by the sights, sounds and smells of the natural world. You may be an ardent advocate for environmental causes, inspiring others with your enthusiasm for simplifying life. While you appreciate the finer things in life, you are also able to throw off the shackles of materialism to pursue more satisfying goals such as creating warm and loving relationships, nurturing and protecting nature and studying spiritual values.

Hygieia - The Soul Of Health



'Health, greatest of all the blessed gods, may I live with you for the rest of my life'
Hymn to Hygieia, Ariphron

In the ancient Greek sanctuaries of healing statues of Hygieia, the goddess of health, reminded the pilgrim of the archetypal quest for wholeness and well being. Adorned with a simple garment Hygieia was often represented as youthful, radiant and smiling, attributes that are companions of health. Either she is holding or feeding a snake. Carrying a bowl of food or water Hygieia is generally represented tending the sacred snakes that were housed in the temples on the sanctuaries of healing. Sometimes she is presented holding a wreath of laurel, combining victory with health, or other plants known for their medicinal properties, a motif that links her to an ancient tradition of woman healers, herbalists and midwives.

Hygieia's intimate relationship with the serpent recalls her link to the ancient goddesses of healing and nature. Earth and Mother goddesses were accompanied by serpents and the ancient belief was that they transmitted the power of healing and prophecy. As a symbol of both regeneration and divination serpents were sacred to the goddess who gave them sanctuary in the bosom of the earth. Later the cult of sacred snake was adapted and serpents were included in the rituals at the sanctuaries that offered healing and spiritual guidance. The ancients also saw the sacred serpent dwelling in the body and when awakened it could offer illumination, vitality and the radiance of well being. As nature became less mysterious snakes became demonized, no longer transmitting the ancient wisdom of healing but transporting demonic and darker forces.

Hygieia nurtures and tends the snake revering its sacred power to rejuvenate and shed its old ways. She celebrates its dark, earthy force and recognizes the divine mystery of illness and health. Like her ancient ancestors, Hygieia honored the union between the natural and supernatural worlds knowing that health and well being depended on bringing them both into a cohesive whole. Goddess wisdom also knew that all of nature was animated by spirits that could be petitioned through magical and religious ritual in an attempt to restore equilibrium and well being. Hygieia is the modern surrogate of the ancient goddesses who honor the great mystery of healing.

To the Greeks Hygieia personified health, that mysterious amalgam of well being, wholeness and happiness. She emerged in the classical period when the cult of Asclepius became widespread and flourished throughout

the Graeco-Roman world. Hygieia was mainly represented as the daughter of Asclepius, the Greek god of healing, although sometimes known as his wife. Her numerous statues equal those of Asclepius and in the cult of healing she was revered and equal to the god himself. Interestingly the popularity of temple medicine practiced at the sanctuaries of Asclepius paralleled the growth of rational medicine that had emerged through the teachings of Hippocrates. Hygieia stands at the crossroads of magico-religious healing rituals and contemporary medical practice, holding the tension between the two but allowing each to co-exist. She embraces wholistic healing in every manifestation as she is dedicated to the pursuit of health.

In the ancient community disease was portrayed as a possession by a demon, the intrusion of a spirit or the curse of a god. In the cult of Asclepius illness was seen to be more the call of the divine, the voice that echoed the split between body and spirit. It was the illness that called the pilgrim to the temple to restore equilibrium and well being. At the temple the patient would prepare for an encounter with the god often by fasting, bathing or meditating. Then the patient was escorted into the temple where they would lie down and fall into a deep sleep wherein the god would appear to them in a dream. Once contact with the god had been made through the inner process of the dream the patient would be restored to health. In the healing sanctuaries of Hygieia health was evoked through contact with the divine in the inner sanctuary of the soul. Yet synchronous with these practices were medical doctors who suggested that disease was a natural occurrence and not of the god's making. Hence Hygieia eventually became associated with mental health and well being as rational medical doctors gained a stronghold on the health of the physical body.

When Hygieia is strong in a birth chart we are reminded that health is the alignment of body and soul, heart and mind, outer success and inner peace. One at the expense of the other constellates dis-ease in the temperament that may manifest as a physical symptom, mental anguish or emotional pain. Hygieia is the personification of Health who calls us into the inner sanctuary of the soul to restore health and regain equilibrium. On a divinatory level Hygieia will be chosen when the healing of a situation is imperative. Rational healing is not the only answer. It must be accompanied by attending to the root cause, which ultimately is the illness in the soul. In a psychological sense Hygieia is soul of health, the urge to attend to psyche and its needs by nurturing our deeper urges and impulses. Feeding the snakes is a metaphor for nurturing the dark and mysterious aspects of the soul and attending to the unconscious.

In astrology Hygieia represents health that is forged through the alliance of the natural with the supernatural, the right brain with the left, the inner world with the outer, the serpent with the soul. Hygieia reminds us that health is an archetypal image embedded in the psyche. When the soul is not nourished or attended it speaks through illness and disease. The placement of Hygieia by house and sign that follow are where the goddess seeks her expression in your life.

Hygieia is in the 5th House

The 5th house of the horoscope symbolizes the theater of the self and with Hygieia in a leading role it suggests that your well being is intertwined with creative self expression. As a child the 5th house is the playground and the park where the freedom of open spaces inspired your urge to be vital and robust. Later it was games, sports and recreation that became critical to your physical and mental health. As an adult the playhouse of the 5th sector of the horoscope is the arena where you are able to express your artistic self. Therefore with Hygieia here it suggests that your vitality, happiness and sense of feeling healthy are intimately connected with the ability to express your creativity. As a child you would have first experienced how alive and vital you felt when engaged in play and this would be an early touchstone in forging your identity. Later your identity and sense of self would have matured the more you became engaged with activities that promoted your creativeness and imagination

Besides being entertaining and amusing the sphere of creativity is therapeutic in your life. You may have

recognized how essential amusement and having fun are in reconstructing a healthy lifestyle. You also are aware of how activity and play engage the individual in feeling alive and well. Therefore you might have been drawn to work in physical education or sports training or be interested in therapeutic processes like sand play, inner child work or art therapy.

Your lifeline and road to health lead through the playhouse of the inner child. Therefore if there is not enough time for play, enough joy, or enough space for the expression of the creative self you will probably become run down, prone to feeling off-color, even sick. Hygieia will call you back into her sanctuary where it is necessary to amuse yourself and become engaged in the theatrical production of your life. To regain, maintain or improve the health quotient in your life you need to take some leisure time to explore the creative aspects of your self and risk hanging out in the playground of your life.

Hygieia is in Scorpio

In the sign Scorpio Hygieia finds her expression through your intense and passionate urge to be whole. This pattern may be woven into your life in many ways. One may be that you have a deep urge to be involved with therapeutic rehabilitation and through your own cathartic experience you feel called to minister to others. This combination suggests you have an instinct for in depth healing which may lead you into the areas of psychotherapy, grief and loss, palliative care, primal healing, physiotherapy and other forms of deep body work. Your vocation involves being engaged with trauma and recovery as you have a natural instinct to be able to deal with critical issues in a way that is helpful and transforming. While you may not forge your career in these ways the goddess calls you to this vocation as therapist with colleagues, friends, family and loved ones. You know the double-edged healing power of both disclosure and containment, being able to listen respectfully and honor the sanctity of what has been revealed.

Placements in this sign of the zodiac need to descend below the surface in order to find their authentic essence. Death and life are mysteriously intertwined together like the two snakes that interlock themselves on the caduceus. Their fate does not rest with what is visible but rather with what is not, engaging the individual in mystery and an inevitable confrontation with the truth. Therefore part of your own mastery in feeling whole and happy involves your descent into your own legitimacy and honesty, often facing the uncomfortable truth of the past to be free to experience the future. Healing involves the confrontation with pain and loss, death and suffering in order for closure to mend the festering wound. You have an unerring need to be honest with yourself and others, which leads you into your own healing. While betrayal or loss may create the wound it is your triumphant instinct for life and trust in your own strength and courage that will heal the damaged soul. Your capacity to face crisis and be stronger for the experience is great. Therefore you should never fear that you would not be able to see the light again or be anxious that things will never get better, as the goddess of health guides your journey through the dark channels of the unconscious to help strengthen your spirit and fortify your soul. She helps navigate your journey down into the depths of the self to recover the transforming essence of the self.

Ariadne - The Labyrinth Of The Soul



'To be always fortunate, and to pass through life with a soul that has never known sorrow, is to be ignorant of one half of nature.'

Seneca

Daughter of the great dynasty of Knossos, Ariadne's fate was overshadowed by the curse that plagued her family. In the guise of a great white bull, Zeus had abducted her grandmother Europa from Phoenicia and brought her to Crete. Her mother Pasiphaë had also become enamored by a great bull. Ariadne participated in the family fate: as Pasiphaë's daughter her lifeblood was impassioned and as Europa's granddaughter her destiny was to abandon her ancestral home.

Poseidon cursed Ariadne's family when her father Minos refused to sacrifice his most magnificent bull to the god. Spurned, the god aroused Pasiphaë's shameful lust for the impressive bull that became embodied in her bull-son, the Minotaur, human from the shoulders down. Banished into the labyrinthine blackness below the palace Ariadne's half-brother, the Minotaur, fed on sacrificial children sent from Athens every nine years. Heroic Theseus was one of fourteen youths sent to Crete to face death at the hands of the Minotaur.

When Theseus arrived to participate in the bull games Ariadne's passions were ignited when she saw him for the first time. Beguiled by the handsome hero, Ariadne devised a plan for Theseus to slay the Minotaur and return safely through the dark tunnels of the labyrinth. For her complicity Theseus promised he would marry her and take her away to Athens. Unconscious that her fate was enmeshed with the god Dionysus and not Theseus Ariadne set upon her course to help her lover and in turn betray her family.

Through the dark labyrinthine tunnels Theseus crawled, quietly, mindful not to make sounds that would waken the sleeping Minotaur. Wrapped around his wrist was a ball of yarn, tied to the pillar at the entrance of the maze, which unravelled as he made his way through the dangerous tunnels. Ariadne's thread was the umbilical cord that connected him to the outer world and guaranteed his return after he killed the Minotaur. That evening Ariadne escaped with Theseus. In the dark Mediterranean night they set sail for a victorious return to Athens. Leaving behind her father and sacrificing her brother she surrendered to the passion that burned inside, the rapture only Aphrodite could inspire, a similar fervor that had inflamed her mother and grandmother. The next night Ariadne and her lover reached the island Naxos. Exhausted by traveling and fatigued from the emotional

turmoil that had preceded their escape they collapsed into a deep sleep. But as the rays of the morning sun lit her face Ariadne awoke to discover her lover had vanished. At the edge of the shore she saw the sails of his ship in the distance. Athena had carefully woken Theseus before dawn, setting him on his course home without Ariadne. Abandoned, betrayed and used, Ariadne descended into her own complex world on the shores of Naxos.

Blinded by her passions Ariadne had been complicit in her abandonment. In betraying her family to follow her hero she had set the cycle of betrayal in motion. Projecting her heroic self onto Theseus had left her separated from her own center. Alone Ariadne was forced to connect with her internal world. At this threshold Ariadne experienced an epiphany of Aphrodite the goddess who ignited the passionate fires that led to her suffering. Appearing to Ariadne the goddess revealed her true fate: she would wed her real soul mate, the divine Dionysus. Dionysus celebrated their sacred marriage by offering Ariadne the crown as the symbol of their intimacy and eternal union.

Ariadne's myth portrays the heart's painful journey when connection to the inner self is severed and sacrificed to the lover. Ariadne followed her lover's course rather than her own internal labyrinthine journey, losing her genuine direction. Using the thread, the symbolic connection to her inner core, to serve the hero Ariadne lost contact with her own inner wisdom. Abandoned she was no longer able to define herself exclusively through a partner; therefore a more authentic sense of self could emerge. The painful process of confronting her naïve trust and blind faith in Theseus enabled her renewal and redemption. In psychological terms a more divine sense of union is possible when projections onto the other are consciously relinquished. Dionysus embodies a woman's masculine spirit enabling her to define herself in terms of her own needs and not through someone else.

When Ariadne is prominent in the birth chart she reveals the course of the heart encouraging the individual to acknowledge that the threads to their inner self are tenuous and must be honored in relationship. Ariadne celebrates a more intimate connection with the heart, whether that is through a personal relationship, a new creative endeavor or a new course of life.

In astrology Ariadne represents abandonment as an archetypal process that strips away the mind's illusions in order to hear the calling of the true self. Confronted by the painful reality of being left the individual is forced to relinquish their hopes and fantasies in order to awaken to the authentic path of the heart. Ariadne embodies the soul in relationship that must first experience the painful course of the labyrinth before a divine connection can be realized. Following is the astrological thread that Ariadne weaves through her house and sign in your horoscope.

Ariadne is in the 2nd House

Maintaining a healthy sense of worth is sometimes a precarious matter, but good self-esteem is also one of the most valuable possessions of any human being. Material goods come and go, but a healthy sense of self is vital for survival and growth on this planet earth. These are sentiments close to your heart. Money, material resources and your own confidence are central themes in your life. It is possible that you have a healthy sense of self-esteem nurtured from a young age it is also likely that your confidence has been shaken at some stage of your life. Perhaps you rely too heavily on others for money and sustenance or maybe you are in conflict with others over your moneymaking priorities.

The lesson is clear - beware of a lazy attitude to material wealth and in particular beware of greed. Otherwise at some stage in your life you are likely to suffer from a very low sense of self as the result of relying too heavily on someone else's resources or because you lose your benefactor. On the other hand you may trust a close friend or spouse only to discover that this person was not worthy of your faith. The thread of Ariadne in your life

could suggest that you are vulnerable to the loss of resources. On the other hand the heroine also suggests that it may be through this loss that you come to recognize the strength of your own resources. Check with your inner guidance before you share your assets with others.

However, the benefits of this placement of the goddess Ariadne are that you can build your own self-esteem and learn to rely on your own resources. A little soul searching can go a long way. You begin to discover the true worth of moral integrity and spiritual values. As the Christian Bible states in Luke 12.33.34, *'Sell your possessions and give to the poor. Provide purses for yourselves that will not wear out, a treasure in heaven that will not be exhausted, where no thief comes near and no moth destroys. For where your treasure is, there your heart will be also.'*

Ariadne is in Virgo

You have the ability to focus on a project to the exclusion of all else. When you are inspired you are a tour de force combining the skills of application and concentration. You study and learn your craft, taking note of the details that are required for successful application. For this reason you can shine in any practical or intellectual field that requires attention to detail. On a simple level you may enjoy solving puzzles, word games, knitting, weaving and reading mysteries. You are adept at seeing the threads. These are things that you can understand and control. Relationships with loved ones are quite a different matter.

You are likely to learn that hard way that you cannot be in command of human emotions, either your own or other people's. If you try to force your own ideas on to others then you are likely to lose. Your natural reaction is to try to have power over your own emotions in matters of the heart. If you do engage in an intimate relationship then you are likely to feel overwhelmed by the many threads. You feel lost, dependent on something that is not solid but changes. You may try to direct your lover's actions through criticism, withdrawal, or neglect. This sort of behavior is ultimately your biggest downfall. You are likely to lose yourself in your marriage. Perhaps it is a marriage of two minds, but you need to also acknowledge the emotions.

Ariadne is asking you to tread carefully in love affairs or reap the sad consequences. Matters of the heart are fragile requiring flexibility and unconditional love. You need to learn to limitless love for yourself and those close to you. Stop listening to that magnificent mind of yours and tune into your feelings when it comes to love. Weave the threads that link you to your inner self. These are tenuous and yet must be honored in relationship and in creative projects. Your true purpose will be revealed as you learn to trust your ability to weave your way through life's challenges.

Europa - The Soul Of The Earth



*'On a beach in Sidon a bull was aping a lover's coo. It was Zeus.
He shuddered, the way he did when a gadfly got him.
But this time it was a sweet shuddering.
Eros was lifting a girl onto his back: Europa'
The Marriage of Cadmus and Harmony, Robert Calasso*

Underneath the Cretan palace of Knossos hidden in a labyrinthine chamber lived a bull-man, the Minotaur, the shameful shadow of the Minoan clan. Two generations earlier the story began when Zeus shape-shifted into a beautiful white bull to seduce a young Phoenician princess named Europa. Like the gods of the old religion Zeus took the shape of a virile and magnificent bull to mesmerize the innocent girl who was unaware that her destiny would instigate the founding of two great dynasties as well as the continent named for the virgin Zeus had abducted.

Europa had been playing in a field gathering spring flowers to make garlands when she became enthralled by a large charismatic bull that meandered into the meadow. Possessed with desire to know the bull, she moved closer. Zeus, the bull-god, knelt before her gently beckoning Europa onto his back. She dared to climb upon him, and then slowly he took her step-by-step across the meadow towards the sea. With the power of a great god, the bull strode the waves across the sea to Crete. Europa clung tightly to the powerful bull, as she rode farther and farther away from her homeland. Zeus had made his conquest. He took Europa as his lover, fathering three children by her; one was Minos the founder of the Cretan dynasty.

Europa's father summoned his sons and instructed them to search for their sister and not to return home until the task had been accomplished. Cadmus set out on the quest, eventually journeying to Delphi to ask the oracle where he could find his sister. The oracle advised Cadmus to relinquish the quest for his sister, as his fate was to found the city of Thebes, not find his sister. In order to find the location of Thebes, he must follow a cow until it came to a place where it would lay down due to exhaustion. Europa had been abducted by a god disguised as a bull; her brother Cadmus is led by a cow to his destiny. Both siblings' destiny is to found a great dynasty guided by the commanding and enterprising bovine instinct. Like the zodiacal sign of Taurus the bull symbolizes inherent resource and power and the ability to either cultivate land or build structures that create wealth.

Europa's son Minos claimed the throne of Crete with the blessing of the god Poseidon, his great grandfather who offered him a gift from the sea. A sacred white bull majestically arose out of the ocean and Minos promised to return it to the god in sacrifice. However, the bull was so regal and powerful, Minos decided not to sacrifice the majestic bull but substitute it for a prized white bull from his own herd. Outraged at the deceit, the earth-shaker Poseidon cursed the Minoan dynasty provoking Pasiphaë, Minos' wife, to be sexually obsessed with the beautiful god-like bull. Her craving led to her becoming pregnant with her monstrous son, the Minotaur. Minos' greed and failure to respect the laws of the gods produced a monster that had to be buried beneath the surface of the family in the labyrinthine dungeons of the palace. Buried shame or repression lurking under the atmosphere of the family home eventually surfaces through the next generations. This became evident through the fate of Europa's granddaughters daughters Ariadne and Phaedra. The myth the Greeks retold was a variant of a much earlier motif when the bull was consort of the earth goddess. Europa is the ancient goddess whose earthy instinct is powerful and resourceful. Europa heralds contact with the ancient feminine instincts that generate the power to create abundance.

Throughout the myth of Europa the bull image reoccurs. It is a multi-dimensional symbol of earthy passions, desires, magnetism, wealth and potency whose shadow is greed and lust. The Great Bull of Heaven was an image of archaic power, fertility and enterprise. The appearance of the heavenly bull of Taurus heralded spring when the bountiful Earth became carpeted with wildflowers and the cycle of courtship began. The great bull is engaging and charismatic constellating the generative power of the feminine. Aphrodite who symbolizes the beauty, sensuality and attractiveness of this archetype is the persuasive erotic power that draws Europa, Pasiphaë, Ariadne and Phaedra into her domain. Europa embodies the wealth and majesty of the bull, its earthy passions and its worldly triumphs.

Europa, as the bull-goddess, reclaims the power to construct and direct the course of her own life. When she is prominent in a birth chart it suggests the individual's present course is to construct a solid foundation that will secure the rapid growth of resources.

In astrology Europa embodies the ability to ride the bull, harness its power and give birth to its resourceful creativity. Innately she is the image of feminine power, guidance and direction. Embodying earthy instincts she knows how to cultivate the earth and create abundance through her passionate, attractive and commanding nature. How she finds expression in your life is explored through the goddess Europa's placement in your horoscope, as follows.

Europa is in the 9th House

Your destiny may be connected with a foreign country. Perhaps your parents left their homeland before you were born, or traveled when you were a child. Your links to their homeland are strong. Your connections with different cultures may not emerge until adulthood when you travel in your own right. It is possible that you "fall in love" with foreign cities or countries. You are likely to have strong feelings for countries that are not your birthplace.

This could also be through marriage. You may fall in love with someone who lives in a different country, or who has strong urges to travel. You may feel that you are being influenced by your spouse's desires to explore the planet, yet if you examine your nature you will understand that you share this passion. Being a true citizen of the world you enjoy multi-cultural activities and are drawn to what feels foreign. Your understanding of different cultures goes beyond the normal responses. You realize that our true homeland is in fact our planet Earth, not individual countries. Your personal philosophies embrace all types of races and religions leading you are on a journey of self-discovery through meditation, prayer, study and travel.

The goddess Europa was carried over the seas by a bull. She dared to climb upon him, and then slowly he took

her step-by-step across the meadow towards the sea. Therefore you are highly likely to travel at least once in your life because of your spouse's work or personal requirements. You need to heed the urgings of your spouse unless financial or other constraints prevent you from traveling to another land. In the rare cases where this placement of the goddess Europa prohibits travel, you are still likely to form significant bonds with people from different cultures. Your connections with these people are likely to shape your destiny. Perhaps a friendship developed through written communications is influential? On the other hand you may earn your living through exporting goods, or forming foreign business partners.

Your destiny is to mix the cultures, whether that is economically, philosophically, emotionally or physically. So it is safe to say that wherever you started from in your family of origin you have traveled a great distance farther on. Even though you may not have physically moved, you have traversed wide landscapes of understanding through exploring avenues unfamiliar to your relatives.

Europa is in Aries

You have an innate sense of independence, a love of your own company and a need to develop your creative gifts in solitude. Therefore you are likely to thrive by creating an environment in which you can spend long hours writing, gardening, studying or some other solitary pursuit. You may enjoy working in the open spaces on an isolated farm or undertaking a spiritual retreat in the mountains. Time spent alone helps you stay in touch with your soul purpose.

You enjoy a challenge. Good fortune comes through your own efforts. Therefore you need to ensure that you are earning your living independently and in a field that offers plenty of freedom. You are a self-starter who needs to initiate changes. Boredom is your enemy. You are not bored with your own company. You become bored when the challenge has dissipated. You need to remain focused on how you can use your talents to be of service to others rather than how to stroke your own ego. The more than you concentrate on compassion, humility and service the more you will fulfill your purpose.

At some stage in your life you may become emotionally attached to someone who has the ability to inspire new horizons. This person challenges you to take risks; however, you need to remain true to your own self. If you become too dependent on this person then you are likely to lose your way for a while. Europa, as the bull-goddess, reclaims the power to construct and direct the course of her own life. You also reclaim this power.

Pandora - A Gift Of Hope



*'Hope sole remain'd within, nor took her flight,
Beneath the vessel's verge conceal'd from light'
Hesiod*

Pandora's story was written eight centuries before Christ in the epoch when gender roles were rigidly defined. Yet the mythic plot echoes timeless motifs, even ones used in contemporary science fiction. In Greek myth Pandora is the first woman, mother of all mortal women, created by the gods to assert their superiority over mankind. Cast as a femme fatale, a 'beautiful evil', she possesses a jar filled with toxins designed to pollute the race of mankind. Alluring, yet dangerous, Pandora represents a vestige of the ancient goddess culture threatening the emergent patriarch. Yet she also transports an indelible gift from the goddess embedded at the bottom of the urn.

Three centuries later her myth was carved on the marble base underpinning the spectacular cult statue of Athena. When designing the Parthenon and its decorations the Athenians chose the myth of Pandora to be the motif at Athena's feet. On the pedestal of the colossal statue suppliants to Athena were reminded of the creation of the first woman and the plagues she brought to bear on humanity, a striking contrast to Athena who brought victory and pride to the Greeks. Like Athena Pandora's birth was unusual. Fashioned out of the earth at the command of Zeus, Pandora was the instrument designed to punish mankind for the unsanctioned possession of fire stolen by Prometheus.

Zeus was furious when Prometheus stole fire from heaven, smuggling it in a fennel stalk and distributing it to mankind. With the theft the distance between man and god narrowed, as fire was the alchemical agent that would refine raw materials and promote the development of mankind. As the human race developed there would be less need for the gods. Zeus' revenge was to send a 'gift' to man that would counterbalance the profit mankind gained from using fire. To date men had lived without evil in a golden age, which now would come to an end through the guile of a beautiful woman.

Zeus instructed the smith-god Hephaestus to fashion a beautiful maiden resembling a goddess out of clay and water. Athena was to teach the phantom how to weave a web, Aphrodite was instructed to make her seductive and Hermes, the trickster-god, was to teach her how to be deceitful. Adorned with beautiful garments from the

Charities, Zeus breathed life into Pandora, who was given as a gift to Epimetheus, the brother of Prometheus. In her hands she carried an intricately designed urn, the dowry Zeus had given her. Shut inside it was all the evils, storms and plagues that bring misfortune to mankind. Instructed not to accept any gifts from Zeus, Epimetheus became enchanted by the beautiful Pandora and forgot his brother's warning. Pandora opened the jar and before she could close the lid disease, old age, pain, toil, death and all the other ills that plague humanity spilled out. When she was finally able to seal the jar nothing remained except Hope, trapped at the bottom. In their benevolence the gods had insured an antidote for suffering. Pandora offers hope when all else has failed.

The myth of Pandora was included in Greek literature synchronous with the time that the myth of Eve appeared in Jewish writings. In both myths Pandora and Eve become the patriarchal scapegoat for all of humanity's troubles aligning feminine power with evil. This mythic misogyny defines the time when masculine values were dominant and feminine values were denigrated, even demonised. Pandora and Eve became the composite projection of evil, blamed for their lack of foresight, chaos and feelings. Underlying the mythic stratagem was a motif from an earlier period when goddess culture was dominant.

In Greek Pandora translates into 'all gifts' and her entry into Greek myth suggested this name because the gods of Olympus each gave her a gift. However, this mythic thread is probably an inversion from earlier goddess culture when Pandora may have referred to the goddess giving gifts. Gift giving became an essential component of Greek culture and this inverted fragment reminds us of the abundant side of the goddess who offers us the cornucopia of plenty. Pandora is born of the earth like Gaia, supplying the gifts of life. And the gift of life she brings that cannot be destroyed is Hope. On a psychological level hope is the mechanism that breathes life into the soul after it has been bruised and deflated.

Pandora emerges at a critical time historically and psychologically. She enters Greek myth when the goddess culture has waned and been rejected and man is no longer in favor with the gods. Psychologically Pandora appears to offer hope in devastating times. She brings a powerful gift that cannot be destroyed by life's ills. Hope is the life force that survives the disaster evoking images of healing and improvement. When Pandora is prominent in a birth chart she confronts us to delve into the deepest part of ourselves to tap the reservoir of faith. Having survived the projections and denigration of the other, Pandora resurrects life once again through the auspices of hope.

In astrology Pandora reminds us that embedded in every disaster is the gift of renewal through the auspices of faith and hope. Illness, destruction, old age and pain are part of feminine wisdom and this knowledge stands in direct contrast to masculine fantasies of a Golden Age and Garden of Eden. How she enters our life is reflected in the placement of the goddess. Descriptions of the goddess by house and sign in your horoscope are next.

Pandora is in the 7th House

You are fascinated by the interactions of people, particularly in marriage and lifelong relationships. On one level this could simply be an enjoyment of gossip, soaps and loves stories. On a deeper level this can be a yearning to understand the intricacies of a soul connection with another person. You need to be careful that you don't become too immersed in your fascination with relationships. Otherwise you could be distracted from your own goals and achievements. You may start with good intentions of pursuing your own dreams but you are easily distracted by the joys of relating to those closest to you.

The goddess Pandora is prominent in your chart indicating that you are particularly inquisitive when it comes to committed partnerships. You make a good counselor once you have mastered your own intimate relationship. You are keen to form a strong bond with a loved one. Marriage is meaningful to you. Once you have chosen a potential life-partner you are happy to make a commitment. At first you are very happy with your spouse, but then you start to feel somewhat abandoned. Perhaps you are frightened about what you will get up to when your

partner is not around? After all when left to her own devices Pandora could not resist opening the box and look where that lead her! She uncovered pestilence and all sorts of ills.

What will you do if left alone? At some point this may be necessary in order to deal with an inner sense of feeling abandoned. One way you might react is to become dependent or possessive. However, it is necessary that you work through your own feelings of abandonment and loss, face what is troubling and move forward. Once you have done this then you are able to forge a strong marriage based on mutual trust and respect. You may also consider becoming a marriage guidance counselor or work in fields that require conflict resolution. You are able to offer hope to other couples either through your work or by setting a wonderful example of a successful, intimate marriage. You are also able to take part in joint projects that inspire others.

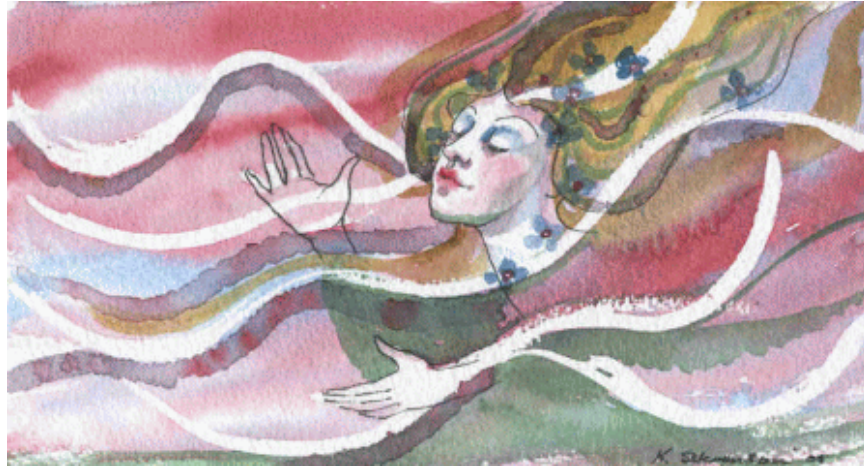
Pandora is in Capricorn

Has anyone ever told you that you have an over developed sense of responsibility? That you work too hard, worry too much or look after your family too much? All of the above? Well it is true. You are a dedicated person of integrity. You are keen to do the right thing in your private life, as well as in society. You hold down a responsible job, working hard to pay the bills and achieve a little extra. If you are married then you are likely to be a stable and loving partner, ready to support your spouse's hopes, dreams and wishes.

Compromise is your middle name! If you are single, then you are a loyal and loving friend, ready to listen to their problems and share their joys. You give regularly to charity, help out on local club committees when possible and do your share on your child's school roster. You are a model citizen. So what is the problem you ask? The problem is that you don't know when to stop. You are so busy being the perfect spouse, dedicated employee, responsible boss, all-powerful parent that you don't know when to take time out for yourself. Just the thought of being a little selfish heralds waves of guilt. You may be frightened that if you stop caring for others, even for a moment, then your achievements will come to nothing, that all will fall like a house of cards. This is not necessarily true.

If it does become a reality then your achievements were not based on a firm reality. You need to consider your own hopes and wishes occasionally. You may need to reconsider your own ambitions, the big ones such as career options and marriage proposals. However, you do not necessarily have to change much in your life. You may only need to consider listening to your own heart on daily matters, such as taking some time to relax and enjoy the sights and sounds of nature. You may even enjoy sitting down and watching someone else do some of the daily chores without feeling compelled to join in. Once you have achieved more balance in your life you will be amazed by your renewed sense of hope and vitality.

Mnemosyne - The Soul Of Memory



*'Thou fill'st from the wingèd chalice of the soul
Thy lamp, O Memory, fire-wingèd to its goal.
Dante Gabriel Rossetti*

The faculty of memory was so important to the ancients that it was personified as a goddess. In Greek cosmogony Mnemosyne was the daughter of Uranus and Gaia, a pre-Olympian goddess who characterized Memory. Being one of the original deities Mnemosyne is the custodian of memory before the advent of writing, literacy, books, recordings and computers. She embodies the voice of an oral culture that communicates from the soul through stories, pictures, metaphors and body language. Mnemosyne finds her voice through the poetry of images revealing her memoirs through a dream, a feeling, a response, a longing or a sudden thought that darts into consciousness. Embedded in the fragments of a song, a myth, or a fairy tale linger ancient truths that awaken the goddess. Dwelling in the soul Mnemosyne unexpectedly arouses memory through our senses and bodily reactions.

To the ancient Greeks memory was a goddess residing in the heart. Memory was soulful, an aspect of psyche that was creative and evocative and the ancients also saw the goddess as mother of the Muses. Goddess culture honored her form through three phases and originally Mnemosyne was celebrated through the Muses of meditation, memory and song. In early myth the Muses were the triune aspect of memory who inspired poetry and song. As rational science and beliefs began to emerge the seat of memory began to shift to the brain, aligning memory with a more logical and calculating experience rendering Mnemosyne a passive goddess who collected and stored life's impressions. Later myth suggested there were nine muses. Zeus visited Mnemosyne for nine nights and was the father of her nine daughters, the Muses, the inspiration and manifestation of the soul of memory. As mistresses of healing and prophecy the Muses inspired and taught others to contact a deeper knowing through their imagination and creativity which guarded the wellspring of memory. As custodians of the arts each had a sphere of influence which they inspired and animated with ancient images and recollections. History, Music, Comedy, Tragedy, Choral Dance and Song, Lyric Poetry, Religious Dance, Astronomy and Epic Poetry were the personifications of the ancient goddess of memory. Apollo, lord of the rational sphere, became their guardian and leader.

Memory's daughters are the muses, the ones who inspire and enchant the soul. Through her and her daughters

we are able to engage in weaving the fragments of memory together to evoke meaning. Mnemosyne reminds us to remember the ancient ways. The goddess of Memory is not just a passive recorder of experience and events but a poetic and heart-rending process that inspires the imagination. Mnemosyne re-collects the emotional experiences, feelings and impressions of our life. She is the archive of all that we have tasted, touched, wanted, smelt and felt. Her memories are stored in the psyche as images, symbols, feelings, impressions and instincts or become imprinted in the body, in the adrenal or olfactory glands, the tension in the muscles, allergies and illnesses. Mnemosyne is rhythmic and reflective, not linear, evoking dreams, images, songs that give continuity to our life's narrative. Memory and imagination are woven together when Mnemosyne and her daughters are aroused.

To the ancients the sacred sanctuary of Mnemosyne and the Muses was the museum. These ancient shrines dedicated to the goddess ceded to the structures we know today as museums where we house the great works of the imagination. On an inner level the museum is the sphere of Mnemosyne where impressions and feelings from the past are evoked in the present situation.

In astrology Mnemosyne, the goddess, helps us remember images and impressions from previous phases of our life in order to give meaning, context and insight into these experiences. She acts as a loosening agent, allowing buried complexes, taboo feelings, repressed memories to breathe again to find some place in the sunlight of consciousness. She connects passages of time together. Links can be made back to times in the previous cycle allowing space for the process of reflection and musing. Following is a report of how Mnemosyne brings the muse into your life experience.

Mnemosyne is in the 10th House

This is a powerful placement of the goddess Mnemosyne indicating that your mother had played a prominent role in your life, inspiring you to either follow in her footsteps or travel to foreign lands in your search of your life path or influential career. Your mother's story, or the story of her family, has an impact on your own life direction. Mnemosyne was the mother of the nine muses. As a daughter and a mother you are inspired to help others through your vocation.

In a woman's chart this may indicate that you consider that your role as a mother is your most significant contribution to society. However, it can also indicate a career, which takes precedence over motherhood. You aim to contribute something significant to society through your career.

In a man's chart, this placement of the goddess Mnemosyne is likely to indicate that your mother influences your choice of wife and career. Perhaps you want to choose a wife who emulates your mother. Your mother may be your muse, inspirational in her own spiritual or artistic talents. Perhaps you have inherited your mother's spiritual values, musical or poetic talents. Whatever talents or values you learn and retain from your mother's influence, you are likely to respect women and their contribution to society, both in the workforce and in childbearing. Your wife reflects this respect.

You are aware of the multi-dimensions of women, and therefore may find it easier to work with women rather than men. You may also be dedicated to working for women's rights, protecting young children and their mothers. You may also be well aware of the need to take care of Mother Earth, working as a gardener or perhaps for environmental causes. You may also be drawn to a career in the arts, in particular singing, writing or dancing. Your challenge is to remain focused on your purpose in life, rather than seeking rewards and recognition for your work. The goddess Mnemosyne is calling on you to express the very best of feminine intuition, to take care of Mother Earth and to lead others by example.

Mnemosyne is in Taurus

The word '*connection*' has several dictionary definitions. It can be defined as '*a person, especially one of influence or importance, with whom one is associated, as by kinship or common interests*'. Other definitions are, '*a means or channel of communication*' or '*reference or relation to something else; context*.' All of these definitions are applicable to your life. You are well aware of the links that exist in your environment. You are sensitive to the connections between yourself and the people in your life, your friends, colleagues and relatives. You work hard to maintain these associations, appreciating the value that each person adds to your life.

You have many fond memories of shared occasions, most probably organized by you because you are the common link. You can be relied on to remember important dates and commemorate them with small gestures. You are also well aware of the connections between people and their belongings. Did you love the 'show and tell' days at school when you were a young child? This is because you treasure special objects; those items that are connected to distinctive memories or that one belonged to a friend or loved one. To you possessions are animated and have a special character as they help you remember special times. You remember that you bought the vase in Florence and the tablecloth in Hong Kong, your mother gave you the scarf and which book is your father's favorite. For this reason you may also be an avid collector or appreciate fine arts or antiques, items that have a personal association, history or many memories attached to them. Objects are beautiful because of the history invested in them.

You may be reluctant to let go of items that are associated with people from your past or anything that may remind you of happier times. This is a lovely trait in moderation, but you need to make sure that you are not becoming too attached to the past at the expense of present day joy. A good clean out or perhaps moving house will help you avoid gathering too much clutter. It is positive that you appreciate tradition, items or rituals that have been passed down through the ages, as long as you also focus on the here and now. You are cultured and may like to study the classics, listen to music from bygone eras and attend ballet performances. You may have some talents in these areas. Your gift is in appreciating beauty, tradition and connections. You have sound values and can share these with other people. The goddess Mnemosyne is calling on you to inspire others to commune in a meaningful way, sharing values, culture and common ground.

Hecate - The Soul In Transition



*'Leave those vain moralists, my friend, and return to the depth of your soul:
that is where you will always rediscover the source of the sacred fire
which so often inflamed us with love of the sublime virtues;
that is where you will see the eternal image of true beauty,
the contemplation of which inspires us with a holy enthusiasm.'*
Anthony Robbins

Hecate became associated with the dark phase of triple goddess who embraced the spheres of heaven (Selene), earth (Artemis) and underworld (Persephone). Her initial association with the underworld was as an attendant to Persephone. It was Hecate who heard Persephone's screams when Hades dragged her down into the netherworld. Hecate was also present when Hermes escorted Persephone out of the underworld. As a guardian of the threshold Hecate witnessed Persephone's descent and release. Her cave is located between the earth and the underworld confirming Hecate's role as an intermediary, bound to neither world but in between both.

As a threshold goddess Hecate is encountered when the paths of our lives converge and we are uncertain which fork in the road to follow. Throughout antiquity she was worshipped at the intersection of roads and by Roman times she was known as Hecate Trivia, the goddess of the three ways. On the night of the New Moon pots of food were left at the crossroads as votive offerings to the goddess. 'Hecate's suppers' honored the transition of one lunar cycle to the next on the night that the old month ended. Statues with three bodies and three heads were erected at crossroads for travelers to leave offerings and say prayers to Hecate for guidance across an important threshold.

At transitional spaces where paths converged travelers would pass from one world into another, therefore crossroads became associated with spirits and shades. Hecate became aligned with ghosts and hallucinations as the ancient Greeks attributed the power to conjure up the dead and the phantoms of the imagination with her. Known as the leader of souls she was associated with magic, divination and contact with the shades of the dead. By the classical period Hecate had become affiliated with witchcraft and magic, known as the goddess of ghosts and night terrors. Her companions were dogs. As guardians of thresholds and instinctually able to trace a scent hounds represented Hecate's instinctual wisdom. By later antiquity Hecate had become the patroness of witchcraft.

Hecate's triple aspect was also reflected in the phases of the Moon. As 'Mistress of the Moon' Hecate governed its dark phase. Sappho called her the 'Queen of the Night' and as a light bearer she often carried two torches. Knowing the wisdom of cycles and their triune phases of birth, death and rebirth the lunar goddess also represented the menstrual crossroads in a woman's life cycle. As a birth goddess she was an intermediary figure not only for souls departing their body but also for souls entering a new one. Hecate appears at the threshold of change in women's lives as she enters a new phase of the life cycle. As a lunar goddess associated with fertility rites she is aware of the richness of the dark and hidden treasures. In her dual role as guardian of the threshold and Queen of the Night she knows that every decision taken at the crossroads must come from a deeper level of soul.

Since her early depiction in epic Hecate has become denigrated, often portrayed as a negative and a dangerous demon of the dark. Disassociated from the totality of the lunar cycle she has become identified only with its dark phase. Fear of the dark, death and the underworld were projected onto Hecate who represented the dismembered connection to the feminine wisdom of cycles. Her ancient myth reminds us of her perpetual role as an intermediary and attendant at the crossroads. We meet her on the precipice of change, at crossroads, on doorways, in transition. During these times of initiation Hecate helps us to accept our disorientation between two ways of being.

When the goddess Hecate is prominent in a birth chart she depicts the area in which we are at crossroads in our lives. Time can sometimes seem suspended while we reorient ourselves to a new way of being. Confusion, loss and disconnection are natural moods during this phase as we let go of what has been in order to greet what may be. By house position Hecate would suggest where you will encounter her in your life; by sign she colors your life with magic and mystery. Following are the astrological descriptions where Hecate enters your experience.

Hecate is in the 5th House

As a young child you are likely to be more serious than your playmates. There is an intense side to your nature, which draws you to adults and drives you away from playgrounds (unless it is to supervise younger siblings). From a young age you have a mantle of authority that slightly disturbs those around you. It is as if you see things that other children don't see, and even some adults don't understand. You were born with an ability to see change before it happens. You sense when the adults in your world are about to change your life and this unsettles you.

From a young age you develop a capacity for dealing with transition periods, most likely through focusing your attention on an artistic talent, or perhaps on looking after younger children. You may also have an eerie ability to commune with nature, and unseen spirits. An imaginary friend may not actually be just your imagination! As a child you have a strong feeling that you have a special job to do on planet Earth. While other people are out having fun, you are purposeful. Perhaps you have an artistic talent, and need to spend hours practising and developing your skill. Later in life you have the chance to earn your living with your artistic talents. Alternatively you may have a real affinity for looking after children. Your main purpose in life may be to raise children of your own. Looking after younger siblings or friends is simply a way for you to learn at your mother's knee, so to speak.

Communing with the natural world is comforting. You may spend hours in your back yard, or neighboring parks, examining ants, caterpillars, birds or a whole range of creatures, large and small. This may be preparation for a life as a zookeeper, veterinarian, marine biologist, animal rights campaigner, or some such career of the natural world. Another alternative could be that you are quite the young wizard when it comes to spiritual matters. You may feel the call to participate in goddess ritual, or to an alternative form of spiritual expression. The goddess

Hecate has strong connections to the spirit world. Whatever path you are on, you are an authority at a young age. The goddess Hecate is urging you to use your creative talents and to encourage others who may be at the crossroads, wondering whether or not to take a more creative direction.

Hecate is in Scorpio

You are an intermediary, a go between who helps people when they are at a turning point in their lives. Like Hecate you are positioned on the therapeutic threshold to the underworld, helping others make the transition into knowing their motives and understanding themselves better or encouraging them to move forward in their lives. You like to help others make a smooth change to end one chapter of their lives in order to begin a new phase. These changes may manifest as an emotionally stressful event or traumatic change and you may have to dig deep to help other people find the resources to cope with their transition. Nevertheless you are resourceful and the rewards for your support and effort are great.

Although you are not looking for material rewards, you could inherit a gift or bequest of financial or sentimental value. Your main incentive is the satisfaction of delving into the more meaningful side of life. You do not like to skim the surface but are prepared to dig deep to mine the truth and the essence. You could literally enjoy working underground as a miner, pit cleaner, gravedigger, deep-sea diver, archaeologist or underground train driver. On the other hand you may enjoy working on a more emotional or spiritual plane working in metaphysics, cosmology, astrology, or psychology.

The goddess Hecate was known to assist the elderly when they were dying. She facilitated their transition into the afterlife. With Hecate in the intense sign of Scorpio you are likely to share this trait with the goddess. You have the strength and presence to be able to work effectively at critical transitions and passages. Your profession may reflect this significant gift through working in a funeral parlor, as a grief counselor or priest. On the other hand you may have the challenging experience of nursing at least one loved one through a terminal illness. The responsibility of caring for your nearest and dearest rests on your shoulders. As difficult as this may be, the rewards are profound. You are a deep, caring and passionate person who is not scared of life's challenges. You are well aware of the force of the spirit, and the spirit world. This makes you a loyal ally, and a frightening opponent. You may also have psychic or healing gifts, which the goddess is calling on you to put to good use.

Cassandra - The Prophetic Soul



'And though I have the gift of prophecy, and understand all mysteries and all knowledge, and though I have all faith, so that I could remove mountains, but have not love, I am nothing.'
I Corinthians 13:2, Bible

Cassandra stood on the walls of Troy and watched Paris' ship enter the harbor. Her brother had returned from Sparta having seduced Helen away from her homeland to bring her to live in Troy as his wife. With the blessings of Aphrodite Paris and his lover Helen had snuck away from her palace undetected and sailed across the Aegean to Asia Minor. A dark cloud shrouded the ship as it anchored. When Cassandra watched her brother and Helen disembark and approach the city gates she was flooded with images of Troy's destruction, filling her with an ominous and terrible feeling. Possessed by this eerie perception she uttered a warning to the crowd that was gathered at the gates to welcome the couple. From deep inside she divined the future: Helen's entrance into the city would lead to its destruction. Ignoring Cassandra and her prophecy the crowds turned away to welcome the new royal couple into their city. Time and time again her message was rejected and ridiculed. Ten years later a similar scenario would unfold. Cassandra would warn the Trojans not to accept the wooden horse into their city. Once again no one would heed her accurate predictions. The Greeks, angry at Helen's abduction, sacked Troy and left the city in ashes.

Cassandra was one of the daughters of the royal family of Troy, a sister to both Paris and Hector and twinned to her brother, Helenus. When the twins were infants they accompanied their parents to the temple of Apollo to celebrate a festival in honor of the oracular god. During the ritual the twins fell into a deep sleep. Two temple snakes slithered into their basket as they slept and bit them on their ears injecting the gift (or poison) of prophecy into them. From that day both Cassandra and Helenus were known for their prophetic nature.

Having the gift of sight Cassandra entered the temple to serve Apollo being called to her vocation as his Pythia, the voice of the oracular god. However, Apollo fell in love with her and demanded she reciprocate his desire. But Cassandra refused to consummate the relationship preferring to worship the god in spirit, not body. Enraged Apollo found a way to avenge her rejection. Knowing he could not retract the gift of prophecy that he had given her when she was so young he cursed her so no one would ever believe her prophecies. The god begged her for one kiss and Cassandra consented. As she opened her mouth to kiss the god Apollo breathed his curse into her insuring others would no longer value her prophetic vision. He turned his back on her, condemning

Cassandra to see the perilous future yet never able to be understood or believed. Cassandra, cursed by the narcissistic god for rejecting him, was later violently assaulted by Ajax upon the altar of Athena when the Greeks were ransacking Troy. After the sack of Troy the leader of the Greek fleet Agamemnon took her as his slave back to his palace of Mycenae. As she approached the mammoth walled city her images of destruction became more and more intense. Racked by the violent visions she screamed a warning for Agamemnon to not enter the palace foreseeing his brutal murder at the hands of his wife. In her heart she also knew that entering the city with him would result in her own death.

Cassandra personifies the medial woman whose intuitive faculties and understanding of the unconscious patterns are not welcomed in an ordered rational society. She sees what others are too fearful to see and exposes the inevitable patterns that underpin the situation. In an atmosphere of control and denial Cassandra is marginalized and demeaned becoming the projective reflection of the fear of chaos and uncertainty. Disbelief and ignorance render her wisdom impotent. When dark feelings, dread or grief are repressed in the atmosphere Cassandra is the medium of their expression. Her curse is that she is not identified with her feelings leaving her misunderstood and marginalized. Her feelings, identified by others as autonomous ravings, isolate her. Cassandra is able to sense what is taboo and un-lived but unable to remain separate from it.

Cassandra represents the archetype of medial knowledge. Unlike the ancient world there are no longer sanctuaries or sacred places to honor her way of knowing. She reflects the need to be aware of our medial skills and intuitive knowledge and seek training to help strengthen the ability to use this skill and not be overwhelmed by it. When Cassandra appears prominently she encourages the individual to find a voice for the medium through understanding the symbols, images, signs and omens of unconscious language. She embodies the ancient ways of knowing in a culture that no longer values prophecy and divination. Her knowledge is not objective but oracular. To embrace Cassandra we must abandon logic, separateness and rationality and enter into the irrational world where meaning is revealed through feeling and connectedness. However, Cassandra reminds us that in a scientific and ordered society our knowing may be rejected. Cassandra encourages us to have the strength of our convictions and a strong and healthy identity about our beliefs.

Oracular knowing springs out of the collective through an unconscious and unbound participation with everything in the environment. When boundaries are blurred and the veil between the worlds is lifted we enter into a participation mystique with the spirits of the world beyond us and may be called to act as a vessel for their message. Cassandra in your horoscope reveals where you are sensitive to the pattern of the goddess. Following are the placements of Cassandra in your horoscope by house and sign.

Cassandra is in the 2nd House

You have a sixth sense when it comes to money. You know how to make money, how to invest your income and how to enjoy the fruits of your labors. Others may not appreciate your efforts to teach them the laws of economics, but you don't seem to mind. You have good judgment in monetary matters and that's all that matters to you. Of course, there are times when your focus on monetary matters can blind you to the reactions of those around you. Others may envy your income and your ability to handle the material world. You are not driven by greed, although that is sometimes how it can appear to your friends, colleagues and loved ones. Those who know you well understand that your spiritual beliefs are often behind your ability to manifest material goods.

Once you have gained the financial security that you seek you may decide to earn your income through an artistic or spiritual pursuit. You are unlikely to be the starving artist in the garret type, but once you are financially secure you could easily begin to explore your artistic talents. This could be through painting, sculpture, drama, dance, film or another related artistic pursuit. Ironically you are also able to earn a substantial income through

your artistic or spiritual pursuits.

The goddess Cassandra was both gifted and cursed, so you do need to be discerning with your personal finances. In a woman's chart this placement of the goddess Cassandra means that you should be wary of taking the advice or entering joint financial ventures in connection with a close personal male friend or lover. You need to follow your own counsel.

In a man's chart this placement could mean that a woman counselor or friend may have good advice to offer for your personal investments.

Cassandra is in Virgo

You have a sharp mind and a sharp tongue. These can serve you well, but they can also be a blight if not kept in check. Ideally you channel your incisive and enquiring mind into study, research or a pursuit that challenges the intellect. You are then able to write respected and insightful works on your study and research subjects. Your mind is particularly suited to medical research, as you have the ability to combine intellect and intuition. As a result your research can be ahead of its time. Here lies your biggest challenge.

The very qualities that enable you to focus and eliminate distractions are the ones that lead to you being misunderstood by your peers and loved ones. As the saying goes, you "don't suffer fools gladly". You don't mean to be unkind but you forget to soften your words. Others see you as critical and judgmental. Hence the very qualities that help you excel in a field of study, work or research can mar your personal relationships. You need to learn to value the feminine qualities of personal interactions. Feelings are as important as the intellect. If you can remain open to the intuition and the intellectual then you can enter the realms of magical thinking - a potent force in your life, indeed. It is the challenge of being analytical about the intuition that shapes your ability to think magically. There you are drawn to the intuitive sciences such as astrology, homeopathy and alchemy.

In a woman's chart the goddess Cassandra in the sign of Virgo can mean that you are a powerful and intelligent woman who uses her intuition and rational faculties. In some ways you are able to explain what seems unexplainable or know what appears to be unknowable. In a man's chart it indicates that you are likely to attract an intelligent woman who challenges your world view and ways of thinking. You need to respect her and still hold true to your own worth.

Medea - Herbalist And Healer



'Of all things upon earth that bleed and grow, A herb most bruised is woman'
Euripes, Medea

Medea, a princess of Colchis, was known as the 'wise one' for her skill of healing and proficiency at using drugs and herbs. Colchis, which gives its name to Colchicum, the meadow saffron, was a kingdom on the Eastern shores of the Black Sea, considered a foreign, barbaric land through the eyes of a civilized Greece. Medea's ancestors were linked to both the sun and healing long before Apollo became the god associated with these realms. Helios, Medea's grandfather, was the Sun god of the old order, born a Titan's son. Her aunt Circe was a sorceress, a magician, herbalist and healer who knew the ancient ways of plants and spices and how to cast spells. Circe had trained Medea as a young woman in the arts of sorcery, magic and herbalism, teaching her how to mix potions, direct spells and rearrange matter. Medea was also a priestess in the temple of Hecate, honoring the goddess of the dark night and magic. Hecate guided her instincts. As a medical intuitive she knew the magical properties of herbs, the appropriate plants for healing, homeopathic tinctures and the process of preparing and administering these remedies in her caldron. As the surrogate of Hecate Medea knew the timing of the lunar cycle and how to draw down the moon when ritual and ceremony was needed.

However, Medea was unable to withstand the unholy alliance of the goddesses Hera and Athena who petitioned Aphrodite to conspire with them and cause the princess to fall in love with Jason. Medea became enchanted by Eros and fell in love with the Greek hero, who had come to Colchis to retrieve the Golden Fleece. Medea helped Jason achieve this impossible task with the help of special ointments, incantations and timing. Medea enabled Jason, her heroic/lover, to succeed at the trials set before him but in helping Jason be successful Medea had to betray her family and flee her homeland.

On their flight from Colchis Medea visited her aunt Circe who absolved her of her betrayal and eventually Medea arrived at Jason's birthplace, at the foot of Mount Pelion in Thessaly. When she arrived in her new homeland Medea used her great skill at the arts of magic and herbs to rejuvenate Jason's father but also used her sorcery to trick the king's daughters into unintentionally killing their father. To prepare for this procedure Medea disappeared for nine days collecting the special drugs and herbs that she needed. As the Moon swelled she gave sacrifices to her goddess Hecate, then used drugs to help Aeson, Jason's father, fall into a deep sleep. She then cut his throat to let the old blood run out, dismembered him, putting the pieces in a caldron with the liquid herbs she had prepared. Jason's father emerged from the caldron rejuvenated, forty years younger.

Medea's spell captured the daughters of Pelias, the wicked uncle of Jason who had usurped his rightful claim to the throne. The daughters also wished to rejuvenate their father and Medea said she would perform the task again. The daughters prepared their father by dismembering him; however, this time Medea did not put the herbs in the caldron and their father never emerged.

Having been responsible for the murder of the king Medea and Jason once again were forced to escape. While fleeing Medea's herbal bag broke open, spilling her drugs seeding the plains of Thessaly with an abundance of healing and magical herbs. As the first sorceress to perform rituals in Thessaly Medea is the seminal figure behind the region being known as 'the land of the witches'. Her myth intimates that she introduced woman's herbal knowledge from Asia Minor into Greece.

In later myth Medea is usually remembered, not as the skilled healer, but as a revengeful and spurned partner, a woman caught in the grip of jealousy for which she had no antidote. By the classical period the playwrights depict Medea consumed with rage, murdering her own children to avenge Jason's infidelity. However, Medea is more a reminder of the great respect and knowledge of healing, herbs and magic that was brought to the West and then subtly ignored and eventually demonized. Underpinning the myth are fragments of an older tradition. Jason's name means 'healer' and his partnership with Medea complements the old ways of healing before the emergence of rational medicine and the demonization of magic.

As botany evolved away from gathering herbs and digging roots of the pastoral communities to empirical and detailed research, purification ceremonies and the use of herbs became replaced by manmade drugs and prescriptions. The connections to the more instinctual, earthy and natural ways of healing were left behind. Traces of magic, ritual healing and evoking the spirit of the disease began to disappear in the Western medical tradition. Left to carry the ancient process of magic was Medea, the embodiment of the archetypal witch. As a heroine Medea champions the feminine wisdom that intuitively knows how to cooperate with nature and her cycles. She instinctually knows the right time to perform rituals and ceremonies to evoke the healing spirits or exorcize the demons.

When Medea is prominent in a birth chart she reveals the need to explore the ancient feminine traditions of herbalism, witchcraft and magic ritual. Intuitively we know the natural cycle of the body and what it needs to be well. Medea reminds us to honor the ancient custom of relating to the plant world, the wisdom of nature and the powerful healing and transforming properties embedded in the natural world. Instinctually the witch is the impulse that draws us to remedies and potions at the right time and is the urge to create ritual and ceremony to evoke the powers of the goddess. Following are astrological account of how the force of the goddess may be revealed through your horoscope.

Medea is in the 8th House

When Medea brings her magic to the 8th house she unleashes your commanding ability to make powerful things happen to other people. When you're engaged and connected to someone else you have that ability to emotionally empower them to make the right decisions, move through difficult times or reconcile themselves with uncomfortable situations. On a more pragmatic level you may have the ability to help others become more financially resourceful, change a static business situation into a dynamic one, or support a transforming process that allows an individual to move forward. You have a potent and therapeutic gift to exchange with others.

However, you must feel valued in the process or a volcano of feelings may erupt. If it is an emotional exchange you need to feel respected and honored; if it is a commercial venture you need to be remunerated. Without this equal exchange or feeling met by the other, you will feel betrayed. Therefore it would be important to nurture and shelter your powerful insights and instinctual knowledge, as they are transformational and intense. Like Medea

you may be able to help others with their heroic labors but you need to be aware of the cost to yourself in the process.

Part of what informs your uncanny sense of knowing is being in touch with forceful feelings that must be valued. You need to feel a sense of exchange with another in order that your deep-seated capacity for intimacy and containment can be directed towards an honest outcome. You have the instinct that makes a trusted confidant, a profound therapist, a transformational coach and a powerful partner. However, these gifts are not presented to you without your own heroic journey. Coming to understand your own depths and ability to create dynamic shifts in others has arisen out of your own journey through betrayal and loss. Even though these may not be experiences you may relate to, they are feeling states you're intimate with. It is this ability to delve deeply into the darker side of the feeling life where you have discovered your own healing and transformational qualities. Your inheritance is the uncanny ability to penetrate into the territory of deep knowledge and be able to utilize it for your and others growth.

Medea is in Pisces

Medea's lineage was powerful having inherited the wisdom of the witch from her aunt Circe, the regal poise of a queen from her father and the ability to be all knowing from her grandfather. Like Medea you too have a rich legacy. As the goddess is placed in the final sign of the zodiac it suggests your fate is to identify and consciously direct the visionary legacy that was inadequately expressed in your ancestry. Pisces is the sea, the vast, boundless, eternal sea that is also the symbol for the unconscious. Medea is the wise woman whose knowledge of magic and mystery is powerfully transforming. Together these two forces combine to produce the insight and wisdom necessary for the therapeutic understanding of the self and others. Therefore you may have instinctively been drawn to psychic development, devoted to a religious path, compelled to become a healer or psychotherapist. This combination blesses you with the ability to bewitch some with your presence and put others under your spell. However, all gifts are double-edged and the curse may be that you too become lost or confused by your own magic charms or the web of your fantasies. Your destiny leads you into the watery realm of the unconscious where you must metaphorically learn to read the weather patterns and know the tides. Perhaps the best you can do is to sail upon it or like a mermaid, swim in it.

Perceptions shift and uncertainty, confusion and ambiguity are present when we are engaged in the realm of the unconscious. With the goddess in your chart you are called on to trust the process you are in, revere the lunar way of knowing by listening to the voice of your unconscious as it speaks through dreams, feelings, and somatic responses or through omens, signs and synchronicities. You may feel under a veil of illusion as you are drawn away from everyday reality into the fluid world of imagery and vision. This leaves you vulnerable to the unconscious of others. Therefore you need adequate boundaries when involved with others, enough time to pursue your own projects and occasional time out for retreat and revitalization.

Medea's herbs are Echinacea root to cleanse the lymphatic system and golden seal that can aid as an antibiotic while a flower essence that might be helpful is rock rose. You have a great capacity to understand the dialect of the unconscious as it speaks through symbols, signs, omens and metaphors. Therefore as an affirmative ritual to the goddess record your dreams in a journal. In this realm Medea's knowledge of ritual and magic will help assist you in the important transitions of your life. Remember when you are faced with difficult choices or overwhelming decisions you will be empowered through ritual to choose the right path. Let the powerful feeling guide you to making the choice that is right for you.

Conclusion

When using this report, please bear in mind that, inevitably, every chart will contain some contradictory influences. Usually it is the responsibility of an astrologer to synthesize these apparent contradictions in order to present a cohesive and meaningful interpretation of the dilemmas of the chart.

Please also be aware of the fact that each person has positive and negative influences in the chart, and therefore in their lives. The challenge is to accept and overcome the negative influences, so that we can successfully focus on the positive traits. This report outlines both influences, and therefore parts may be difficult to accept. Any advice given is meant to be an aid to people taking responsibility for their own lives. The ultimate decision rests with each individual. The authors and publisher accept no liability for any adverse effects of this report.

This report is meant more of an introduction to the wonders of the asteroid goddesses rather than a complete course in its intricacies. Further studies, or a consultation with a professional astrologer, are encouraged to explore this most ancient scientific and philosophic tool. We hope that you will discover a common thread that gently winds its way through the 12 Goddess placements in your chart, a thread that inspires you to continue to follow your dreams and discover the Goddess or God within.

The text in this report has been written by Australian astrologers Brian Clark and Stephanie Johnson.

Brian Clark is one of the main tutors of a four-year program in applied astrology for Astro*Synthesis. He has been active in astrology since 1972, having served as National President for both The Fraternity for Canadian Astrologers and The Federation of Australian Astrologers FAA. He has twice received awards from the Canadian astrological society, received the Education Award from the FAA and been nominated three times for the International Regulus Award. Brian also lectures on myth and conducts tours to sacred sites in Greece through Odyssey. Brian has a BA from Sir George Williams University in Montreal, Canada and a Post Graduate Diploma in Classics and Archaeology from Melbourne University. He is the author of *The Sibling Constellation* (Penguin, 1999) and a contributing author to *Intimate Relationships* (Llewellyn, 1991), books that have also been translated into French and Japanese. A new book called *Celestial Tarot* is soon to be published by US Games Systems, Inc.

Stephanie Johnson is a founder of Esoteric Technologies, the company that creates the Solar Fire suite of astrology products. She has helped create, design, develop and author Solar Fire and the other products. In particular she is the author of many of the Solar Writer range of astrology report writers. She is also the Marketing Director for Esoteric Technologies. Stephanie runs her own Seeing With Stars astrology consultation business as well as editing the Australian Data Collection. She holds a Federation of Australian Astrologers' Practitioner's Certificate and Diploma and is a member of the Federation of Australian Astrologers. She is a student of Medieval Astrology and the Ancient Wisdom teachings. She has lectured at national conferences, and her astrology articles have appeared in Australian publications including the FAA Journal and the Astrological Monthly Review. Before commencing her professional astrology career Stephanie was a journalist for 15 years in Australia, England and the USA.

Kay Steventon is a Melbourne based artist/astrologer. After graduating from R.M.I.T. in 1980 with a Diploma Fine Art, Kay gained the F.A.A. Professional Astrologer qualification, and 'Living The Tarot' Diploma. Since 1966 Kay has had many solo and mixed exhibitions in Melbourne and overseas, specialising in symbolic art in 1992. Her first Tarot deck and book, 'The Spiral Tarot', was published in 1998. Kay 's second Deck, 'Celestial Tarot',

was published in 2003 with the Celestial book written by Brian Clark. A 52 card deck, 'Goddesses and Heroines' is due to be published 2005, again a joint effort by Kay and Brian Clark.

If you would like further information please contact Esoteric Technologies Pty Ltd PO Box 159 Stepney SA 5069 Australia. Phone/Fax (08) 8365 1117. Email: sales@esotech.com.au Website : www.esotech.com.au

Copyright: Brian Clark and Stephanie Johnson (Seeing With Stars P/L)